



Unicoi County Hospital: Community Health Needs Assessment

Ballad Health

June 30, 2021

Table of Contents

1	INTRODUCTION	3
2	EXECUTIVE SUMMARY	6
3	UNICOI COUNTY HOSPITAL	8
3.1	FACILITY DESCRIPTION.....	8
3.2	SCOPE OF SERVICES.....	8
3.3	PRIMARY SERVICE AREA.....	9
4	COMMUNITY ASSESSMENT PROCESS SUMMARY	10
4.1	MARKET OVERVIEW	10
4.2	METHODOLOGY FOR COLLECTING COMMUNITY INPUT	11
4.2.1	<i>Model/Framework Selection</i>	11
4.2.2	<i>Secondary Data Compilation</i>	13
4.2.3	<i>Key Stakeholder Survey Design</i>	13
4.2.4	<i>Key Stakeholder Focus Group Design</i>	15
5	IDENTIFICATION OF KEY PRIORITY AREAS	17
5.1	PRIORITY AREA MEASURES WITH COUNTY VS. BALLAD HEALTH GSA AVERAGE FOR NE TN COUNTIES VS. STATE COMPARISONS (WHEN APPLICABLE):.....	20
5.1.1	<i>Education</i>	21
5.1.2	<i>Mental Health</i>	21
5.1.3	<i>ACEs</i>	22
6	ROOT CAUSES OF KEY PRIORITY AREAS	23
6.1	EDUCATION:.....	23
6.2	ACEs/MENTAL HEALTH:.....	24
7	COMMUNITY AND HOSPITAL RESOURCES: CURRENT AND NEEDED	25
7.1	CURRENT RESOURCES	25
7.1.1	<i>Education</i> :.....	25
7.1.2	<i>ACEs/Mental Health</i> :.....	25
7.2	NEEDED RESOURCES	25
7.2.1	<i>Education</i> :.....	25
7.2.2	<i>ACEs/Mental Health</i>	25
8	IDEAS AND SUGGESTIONS FOR FUTURE IMPROVEMENT EFFORTS TO ADDRESS KEY PRIORITY AREAS	26
8.1	MULTI-SECTOR IDEAS AND SUGGESTIONS FOR IMPROVEMENT EFFORTS	26
8.1.1	<i>Education</i> :.....	26
8.1.2	<i>ACEs/Mental Health</i> :.....	26
8.2	IDEAS AND SUGGESTIONS FOR IMPROVEMENT EFFORTS SPECIFIC TO BALLAD HEALTH AND UNICOI COUNTY HOSPITAL.....	26
8.2.1	<i>Education</i> :.....	26
8.2.2	<i>ACEs/Mental Health</i> :.....	27
9	COVID-19 PANDEMIC	28
10	CONCLUSION	29
11	APPENDIX	30

11.1	SG2 2021 POPULATION PROFILE.....	30
11.2	AMERICA’S HEALTH RANKINGS GRAPHIC	31
11.3	COUNTY HEALTH RANKINGS GRAPHIC.....	32
11.4	SECONDARY DATA TABLES.....	33
11.5	SURVEY QUESTION DATA	38
11.6	FOCUS GROUP FACILITATION GUIDE	45
11.7	DATA SOURCES AND REFERENCES	46

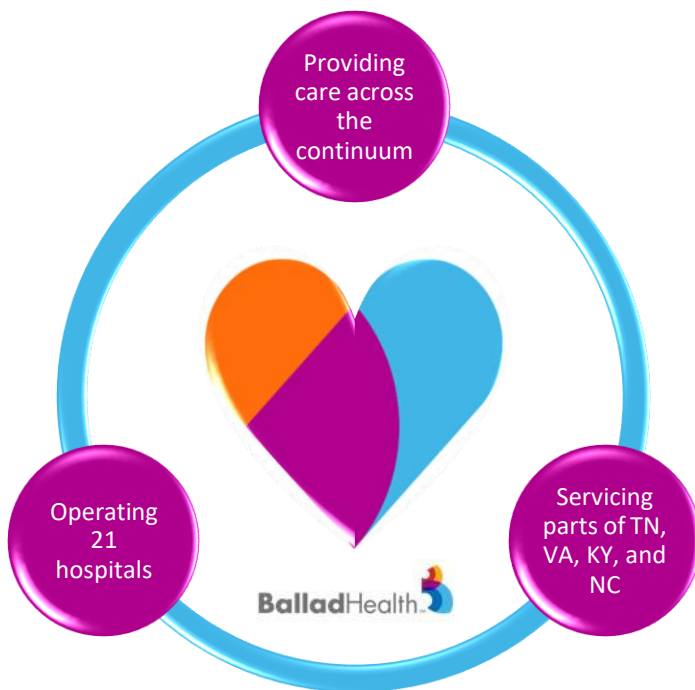
1 Introduction

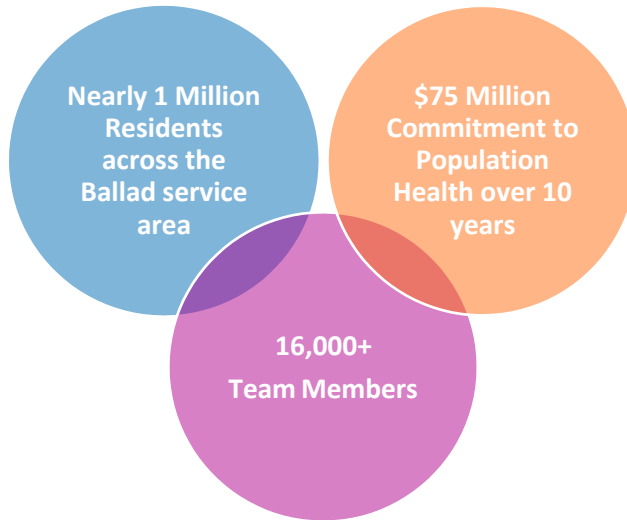
Unicoi County Hospital, an acute care hospital in Erwin, TN, is one of the hospitals within the Ballad Health system. Ballad Health is an integrated healthcare system serving 29 counties of Northeast Tennessee, Southwest Virginia, Northwest North Carolina, and Southeast Kentucky. Ballad was created upon the merger of two large regional health systems, Mountain States Health Alliance and Wellmont Health System, on February 1st, 2018. Through rigorous state oversight, these two competitors have been granted the ability to merge into an integrated healthcare delivery system with a simple and concise mission: to improve the health of the people we serve.

Ballad Health operates a family of 21 hospitals, including three tertiary care facilities, a dedicated children’s hospital, community hospitals, three critical access hospitals, a behavioral health hospital, an addiction treatment facility, long-term care facilities, home care and hospice services, retail pharmacies, outpatient services and a comprehensive medical management corporation.

Ballad’s hospitals include:

- Bristol Regional Medical Center
- Dickenson Community Hospital
- Franklin Woods Community Hospital
- Greeneville Community Hospital
- Hancock County Hospital
- Hawkins County Memorial Hospital
- Holston Valley Medical Center
- Indian Path Community Hospital
- Johnson City Medical Center
- Johnson County Community Hospital
- Johnston Memorial Hospital
- Lonesome Pine Hospital
- Mountain View Regional Hospital
- Niswonger Children’s Hospital
- Norton Community Hospital
- Russell County Hospital
- Smyth County Community Hospital
- Sycamore Shoals Hospital
- Unicoi County Hospital
- Woodridge Hospital





Ballad Health Mission:

Ballad Health is committed to honoring those we serve by delivering the best possible care.

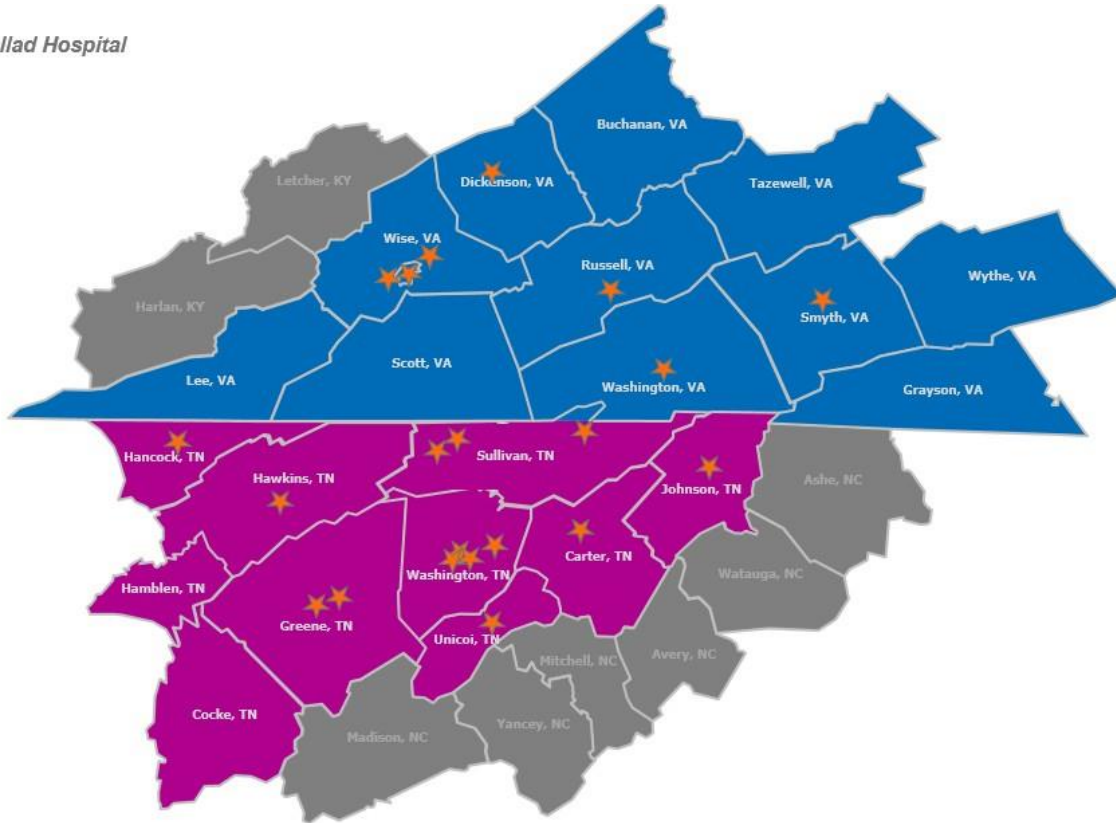
Ballad Health Vision:

To build a legacy of superior health by listening to and caring for those we serve.

The tagline of Ballad Health - "It's your story. We're listening." - is more than a marketing tool. Through the comprehensive state oversight and merger processes, Ballad Health system was created to meet and address local health needs. Realizing that people want to receive care from someone who really listens to them, the organization's name and tagline speak to the fact that good health is about more than healthcare - it's the story of people's lives. Located in the heart of Appalachia, Ballad Health pays homage to the traditions and stories that have shaped people's lives; yet, the organization also looks for new ways to partner with individuals and communities to make the region a healthier place to live and work.

With hospitals and services strategically placed throughout the region, Ballad Health is positioned to be the region's largest health care provider. The system's primary service area is comprised of 21 counties across Northeast Tennessee and Southwest Virginia, with a secondary service area encompassing an additional six counties in Western North Carolina and two counties in Southeastern Kentucky.

★ *Ballad Hospital*



2 Executive Summary

Ballad Health is heavily invested in the health and well-being of its communities. In addition to its enhanced focus on population health management through the merger of the two legacy health systems, Ballad is also the largest employer in the region and the fourth largest employer in the State of Tennessee. Being such a prominent member of the regional economic community, Ballad has a strong desire to improve the health of the region, as well as its employees and their families. Realizing that health is tied to more than just genetics, Ballad is working towards a deeper understanding of the socioeconomic issues that face the population's ability to improve their overall health status. Social determinants of health related to topics such as access to care and the ability to understand complex health conditions often times go hand in hand with people's capacity to make optimal health decisions. Nevertheless, Ballad Health views the current health disparities of the Appalachian region as the opportunity to go beyond the walls of the hospital and work hand-in-hand with communities to make sustainable change happens for generations to come.

As part of the state oversight process, Ballad Health and its hospitals and entities have committed to improving the health status of its service area counties by agreeing to focus on an index of access, quality and population health measures. The population health metrics create a platform for Ballad Health to further engage the efforts of its hospitals in partnership with the surrounding communities in order to drive change in a region that has a number of health disparities and access challenges. Leveraging the community health needs assessment (community health needs assessment) process has helped Ballad to further understand and educate on the health disparities that appear across the individual communities within its service area and has also helped the organization prioritize those issues that are most important in each hospital's community.

In order for Ballad to serve its region most effectively, it is essential to understand each community's individual needs. As such, Ballad Health conducted community health needs assessments guided by frameworks and best practices in order to successfully profile the health of the residents within its service areas. Activities associated with the development of this assessment have taken place from summer of 2020 through the spring of 2021. Primary data was obtained through key stakeholder surveys and focus groups with participants from the local communities, while secondary data was collated from national, state, regional, and county-specific data sources.

Throughout this community health needs assessment process, high priority was given to determining the health disparities and available resources within each community. Key stakeholders from each county participated in focus groups where discussion was centered around the prioritization of current health priorities and identification of potential solutions. The information gathered from a local perspective, paired with county, state, and national data, help to communicate the region's health situation in order to begin formulating solutions for improvement.

According to the 2020 America's Health Rankings, Tennessee ranked 45th and Virginia ranked 19th out of 50 states for overall health outcomes. Both states had high rates of obesity, heart disease, addiction, and mental health concerns. Though Virginia's overall ranking is significantly higher than that of Tennessee's ranking, the health outcomes in Southwest Virginia counties, where Ballard facilities are located, resembles those of Tennessee. After compiling the various sources of information and using population health index as a starting point for discussion, the top health priorities were identified for the communities that each of the hospitals serve. This effort has led to the determination of the top three priority areas for Unicoi County to include **education, mental health, and ACEs**. There are certainly a number of other health challenges in this community, but these rise to the top based on the assessment.

3 Unicoi County Hospital

3.1 Facility Description

Unicoi County Hospital in Erwin, TN is a not-for-profit, 10-bed modern medical facility. The hospital is located along the banks of the Nolichucky River, nestled against the Unicoi Mountains in the southern Appalachian mountains. Unicoi County Hospital offers the latest in diagnostic imaging technology, 24/7 emergency department, sleep medicine, cardiology services and many others listed below.



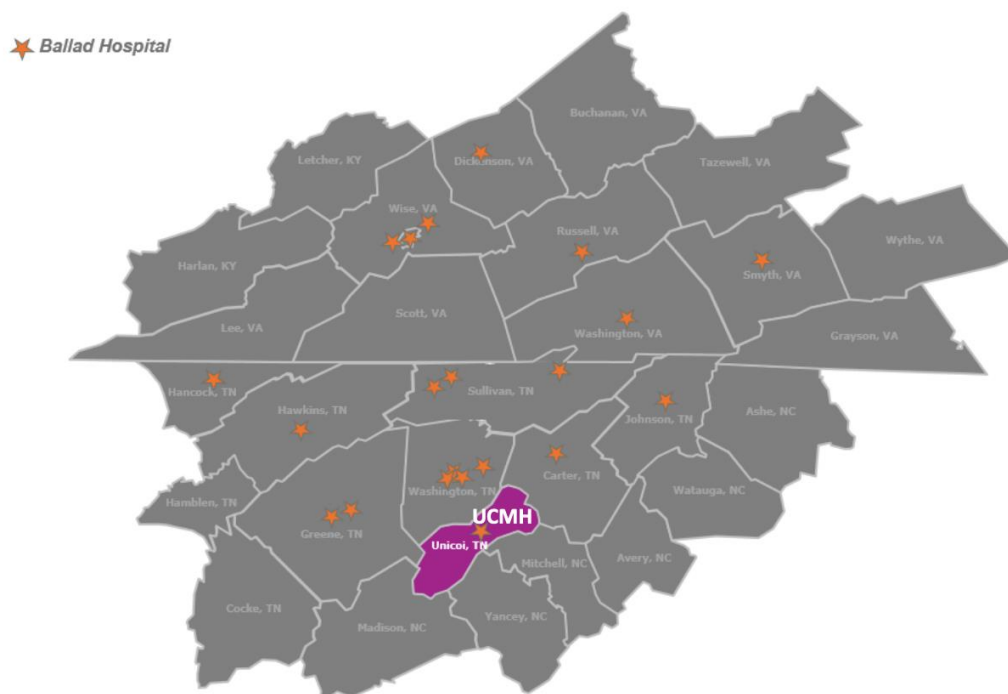
3.2 Scope of Services

Unicoi County Hospital offers the following complement of medical and specialty services:

- 24/7 Emergency Care
- Bone density testing
- Cardiology services
- CT and Open MRI scanning
- Echocardiography
- Nuclear medicine services
- Sleep studies
- Ultrasound testing
- Women's imaging services, including 3D mammography

3.3 Primary Service Area

Unicoi County Hospital's Primary Service Area covers Unicoi County, TN.



4 Community Assessment Process Summary

4.1 Market Overview

Unicoi County Hospital, located in Erwin, TN, primarily serves residents of Unicoi County, TN. In 2021, Unicoi County had a population of 17,956 people. The population projections for Unicoi County over the next five years show that the county will likely experience little population growth overall. However, the age 65+ population for Unicoi County is projected to experience the most population change over the next five years, as it moves from 24.5% of the total population in 2021 to 27.1% of the population in 2026. The aging population of the county presents opportunities for earlier identification and better management of health conditions that oftentimes affect elderly populations in rural areas.

Additionally, the median household income for Unicoi County is \$47,700, which ranks below the Tennessee state average of \$52,400. Other demographic factors influencing health status in the county also includes education levels. A large portion of Unicoi County residents do not have an education past high school (55.9%). The remaining portion of the population reports having some college/associates degree (29.8%) or a bachelor's degree of greater (14.3%).

According to the 2021 County Health Rankings, Unicoi County, where Unicoi County Hospital is located, is ranked 84th in Tennessee for health outcomes and 29th for health factors out of 95 counties. Unicoi County also ranked 21st in health behaviors, 35th in clinical care, and 51st in social and economic factors. A graphical representation of the 2021 County Health Rankings for Unicoi County components can be found in the appendix.

4.2 Methodology for Collecting Community Input

4.2.1 Model/Framework Selection

In the earliest stages of the 2021 community health needs assessment process design for all Ballad Health facilities, numerous guiding frameworks, models, and toolkits were reviewed and analyzed for their potential to serve as the planning model for the assessment. Following in-depth discussions with Ballad Health leadership, it was decided the 2021 community health needs assessment process would be guided by the Mobilizing for Action Through Planning and Partnerships (MAPP) model, with an understanding that aspects of the model may have to be adapted due to the purpose of the assessment for Ballad Health and constraints related to the COVID-19 pandemic. In coordination with the MAPP model, concepts from both Community-Based Participatory Research (CBPR) and the Arkansas Center for Health Improvement (ACHI) Community Health Assessment Toolkit were also utilized for the assessments.

The MAPP model, developed by the National Association of County and City Health Officials (NACCHO) in coordination with the Centers for Disease Control and Prevention (CDC), functions as a six-phase, strategic planning process for communities with the primary aim of improving health. Broadly speaking, the MAPP model allows for the identification of pressing community issues, provides understanding of the current state of resources within a community, and provides the foundational pillars needed to develop action plans for health improvement. The completion of the process outlined in the MAPP model results in two deliverables: (1) Community Health Needs Assessment and (2) Community Health Improvement Plan. As mentioned, components of the MAPP model will be slightly adapted to meet the needs of Ballad Health's community health needs assessments. For a summary of how Ballad Health's 2021 community health needs assessment process will align with the MAPP model phases, please view Table 2 below.

As shown in Table 2, the first step in the planning process was the creation of a Regional Assessment Workgroup between Ballad Health, all local health departments in Ballad Health's geographic service area (GSA), Tennessee Department of Health County Health Councils, and local health coalitions. This regional workgroup was tasked with the creation of core indicators to be included and assessed, shared processes and practices for methodology, and the identification of synergies and paths to collaborate between Ballad Health and all other entities represented in the regional workgroup in terms of community health needs assessment efforts. The goal of this collaborative effort for the community health needs assessment process is to minimize community assessment fatigue and leverage efforts and resources utilized during the assessment process.

Ballad Health utilized a mixed-methods approach for primary and secondary data collection to gather regional information to inform the 2021 community health needs assessments. The secondary data collection entailed the compilation of secondary data pertaining to agreed upon metrics and indicators from an array of verified sources. The primary data collection component involved both a key stakeholder survey and key stakeholder focus groups. Findings from both research methods were used to prioritize the needs of the community served by each Ballad Health facility and determine priority focus areas for future improvement efforts.

Table 2	
MAPP Model Phase	Ballad Health 2021 Community Health Needs Assessment Process
<p>1. Organize for Success/Partnership Development</p> <p>Stakeholders within the community gather to form partnerships and foster collaboration for assessments guided by the MAPP model.</p>	<ul style="list-style-type: none"> ▪ Development of Regional Assessment Workgroup between Ballad Health, all local health departments in Ballad Health’s geographic service area (GSA), Tennessee Department of Health County Health Councils, and local health coalitions.
<p>2. Visioning</p> <p>Individuals from Phase One determine the primary focus and vision for the MAPP process.</p>	<ul style="list-style-type: none"> ▪ Development of core indicators, shared processes, and practices. ▪ Identification of synergies and paths to collaborate. ▪ Creation of shared vision for the overall health and well-being of Northeast Tennessee and Southwest Virginia Communities.
<p>3. MAPP Assessments</p> <p>Quantitative and qualitative data from both primary and secondary data sources are compiled for the purpose of understanding the current state of the overall health and well-being of the community.</p>	<ul style="list-style-type: none"> ▪ Development of secondary data packages for community data. ▪ Distribution of Key Stakeholder Survey. ▪ Facilitation of facility-based focus groups.
<p>4. Identify Strategic Issues</p> <p>Data are analyzed to determine issues within the community that serve as impediments to reaching the vision detailed in Phase Two.</p>	<ul style="list-style-type: none"> ▪ Statistical and thematic analysis for survey results and focus group findings performed to identify issues within communities. ▪ Further prioritization of community issues with key stakeholders from each community.
<p>5. Formulate Goals and Strategies</p> <p>Goals and strategies are identified by the community to address the strategic issues identified in Phase Five.</p>	<ul style="list-style-type: none"> ▪ Potential goals and strategies are identified by key stakeholders in each focus group. ▪ Facilitation of another round of focus groups for each facility to further parse out action plan components. ▪ Potential goals and strategies inform the development of Community Health Needs Assessment Implementation Plans to be brought to leadership at each facility. ▪ Finalization of Implementation Plans.
<p>6. Action Cycle</p> <p>Based on the goals and strategies from Phase Five, action plans for the achievement of the vision outlined in Phase Two are implemented and evaluated.</p>	<ul style="list-style-type: none"> ▪ Community Health Needs Assessment Implementation Plans are implemented and evaluated for each facility.

4.2.2 Secondary Data Compilation

In accordance with the MAPP model, once desired metrics were identified and agreed upon by all members of the regional workgroup, comprehensive data packages were created for all counties in Ballad Health's GSA. In knowing that research estimates that at least 80% of a person's health is related to non-medical factors, the data packages were designed to incorporate both medical and non-medical factors with equal importance in terms of their role in the overall health and well-being of the community. The data packages include approximately 60 metrics for each county in Ballad Health's GSA concerning each of the following overarching topics: health outcomes (15 metrics), health behaviors (14 metrics), health determinants (12 metrics), physical environment (3 metrics), clinical care and health resources (11 metrics), maternal and infant health (3 metrics), and adverse childhood experiences (2 metrics).

The data packages were shared with key stakeholders in the community in an excel workbook format. Two separate excel workbooks were created, one for the Northeast Tennessee counties and one for the Southwest Virginia Counties. Within each workbook, an instruction tab detailing how to interpret and utilize the data was included, as well as separate, alphabetized tabs for each county in those associated areas. Within each tab, metrics were organized into tables based on the seven topics listed above. For each metric, the following components were presented in the associated table:

- Metric name
- Metric definition
- Metric value for the associated county
- Metric value for associated state
- Hyperlink to data source where metric was found

4.2.3 Key Stakeholder Survey Design

Following guidance from the MAPP model, the Key Stakeholder Survey was designed with the primary aim of identifying the most-pressing community issues. In aligning with principles of CBPR, the key stakeholder survey was designed to allow key stakeholders to frame community issues in their own words through the use of open-ended questions. In addition to the identification of community issues, the key stakeholder survey was also designed to discern why survey respondents believed the community issues they selected had the greatest effect on the overall health and wellbeing of their community. Questions related to ideas and suggestions for improvement efforts, gauging the success of efforts after the previous community health needs assessments, and community struggles related to the COVID-19 pandemic were also included in the survey.

Data from the key stakeholder survey was coded and analyzed via MAXQDA Analytics Pro 2020. Data was coded and analyzed by primary and secondary coders who are team members of the Division of Population Health within Ballad Health.

4.2.3.1 Key Stakeholder Survey Demographics

The survey was comprised of thirteen questions, with those being a combination of both close-ended and open-ended questions. Both statistical analysis and thematic analysis were performed on survey results dependent on the question type (statistical analysis for close-ended questions and thematic analysis for open-ended questions) in order to obtain frequencies and percentages. The survey was distributed via Survey Monkey from the Division of Population Health at Ballad Health to key stakeholders in Northeast Tennessee and Southwest Virginia that were identified by leadership at Ballad Health. Stakeholders were selected due to their involvement in the health of the community and their direct relationship to the communities served. The survey was distributed to approximately 350 stakeholders, who each represent unique organizations in Northeast Tennessee and Southwest Virginia.

One hundred and sixty-nine (n=169) organizations completed the survey, for a response rate of 48%. In terms of the geographical breakdown of survey respondents, 36% of survey respondents listed at least one county in Southwest Virginia as part of their service area, and 64% of survey respondents listed at least one county in Northeast Tennessee as part of their service area. There was some overlap in terms of the geographical breakdown of survey respondents for individuals who work in both Northeast Tennessee and Southwest Virginia; those individuals are represented in both categories. Survey respondents represented an array of different sectors in the community, which included the following:

- Law Enforcement
- Religious Communities/Churches
- School Systems
- Governmental Organizations
- Health Departments
- Non-Profit Organizations
- Academic Institutions
- Businesses
- Health Care System.

All key stakeholder survey questions and associated findings are listed in the Appendix. Findings are filtered to reflect the responses of key stakeholders in the state in which the facility is located. Because Unicoi County is located in Northeast Tennessee, survey findings presented in the report and the Appendix are from the 64% of survey respondents who listed at least one county in Northeast Tennessee as part of their service area.

4.2.4 Key Stakeholder Focus Group Design

Independent focus groups were conducted for each Ballad Health facility in order to provide specific and unique information for each community being served. The MAPP model and questions from the key stakeholder survey were used to guide the development and construction of the focus groups. Because the key stakeholder survey primarily dealt with the identification of community issues, the focus groups were primarily designed to prioritize community issues identified through the key stakeholder survey and discuss actionable items around how to best address these community issues. Questions related to root causes of community issues, the current state of resources to address community issues, needed resources to initiate improvement efforts and be successful, and community struggles related to the COVID-19 pandemic were also included in the focus group facilitation guide.

The focus groups were organized into three main components as outlined below:

- **Data Presentation:** Focus group facilitators led the focus group participants through a thorough review of the secondary data compiled for each service area and the findings from the key stakeholder survey.
- **Prioritization:** Focus group facilitators led focus group participants through the prioritization of the community issues that were identified in the key stakeholder survey for their specific community.
- **Discussion:** Focus group facilitators helped engage focus group participants in rich discussion concerning the priority focus areas identified via a structured facilitation guide.

Multiple team members from the Division of Population Health within Ballad Health attended each focus group and were assigned one of the following roles:

- **Facilitator:** Present secondary data and key stakeholder survey findings, lead focus group through prioritization process, and facilitate discussion surrounding priority focus areas identified by the focus group.
- **Notetaker:** Take detailed notes on the discussion surrounding the priority areas.
- **Chat Box Moderator:** Monitor the chat box on the WebEx platform to ensure all communications were acknowledged and addressed.

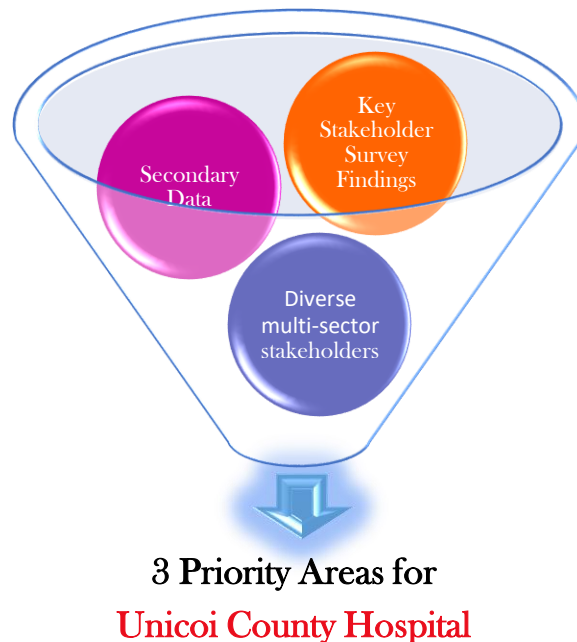
Following the conclusion of the focus group, the facilitator, notetaker, and chat box monitor collectively reviewed the notes to ensure accuracy and address any areas of confusion. Once focus group notes were finalized and approved, focus group data was coded and analyzed by primary and secondary coders who are team members of the Division of Population Health within Ballad Health.

4.2.4.1 Key Stakeholder Focus Group Demographics

The key stakeholder focus groups were conducted virtually via WebEx and were one hour and thirty minutes in length. For Unicoi County Hospital, there were six (n=6) focus group participants. Similar to the key stakeholder survey representation, focus group participants represented an array of different sectors in Unicoi County, which included: the school system, businesses, the health care system, and more. For stakeholders who were not able to attend the focus group in real-time, blank facilitation guide templates with questions concerning the three priority areas identified by the focus group participants were sent to them immediately after the conclusion of the focus group. This allowed key stakeholders who were not able to attend the focus group in real-time to still provide input and Ballad Health to ensure the involvement of diverse stakeholders.

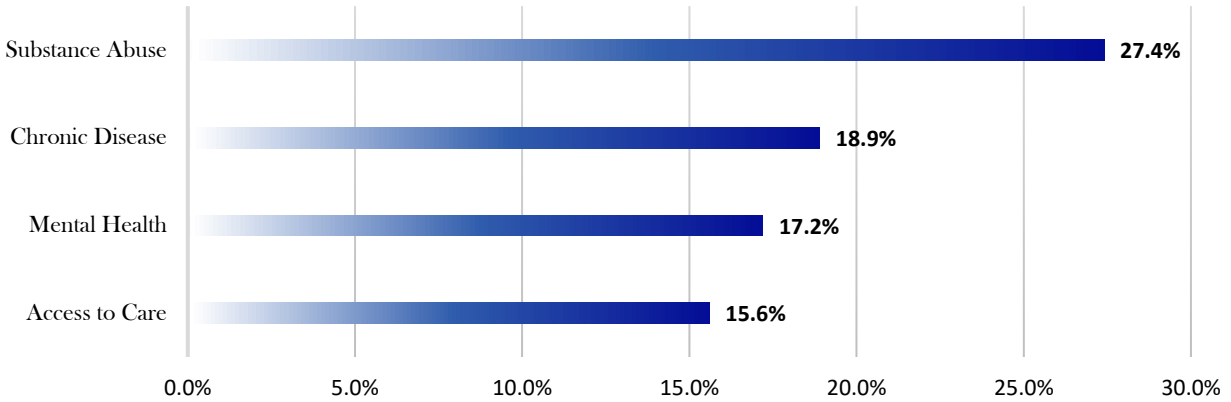
5 Identification of Key Priority Areas

Analysis of secondary data for Unicoi County, findings from the key stakeholder survey, and the perspectives of diverse key stakeholders led to the prioritization of community issues for Unicoi County Hospital as depicted in the graphic below.



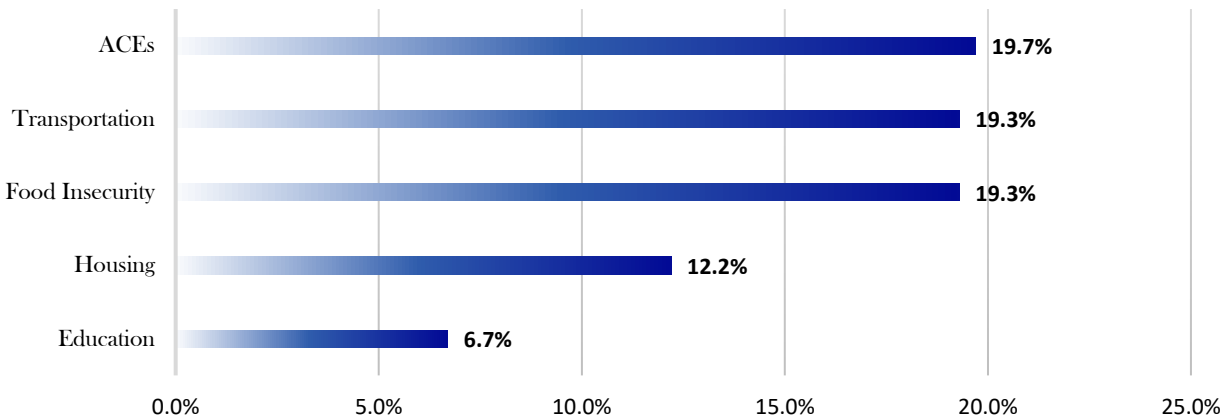
As discussed in the section concerning the design of the key stakeholder survey, three of the thirteen survey questions dealt with the identification of the most pressing community issues. The first of the three questions dealt with asking key stakeholders to frame in their own words what the top three health-related issues their community was facing. The second of the three questions was handled in the same manner as the first, except now the survey question asked key stakeholders to identify the top three social or environmental issues their community was facing. The last of the three questions sought to incorporate the voice of the community to the extent possible through asking stakeholders to identify the issues they believe residents in their community would like to see efforts prioritized around. Results of these three survey questions from respondents who work in Northeast Tennessee are shown in the graphs below. The percentages on the bar graphs represent the percentage of Northeast Tennessee respondents who mentioned a particular community issue or concern.

PLEASE LIST THE THREE MOST IMPORTANT HEALTH-RELATED ISSUES THAT AFFECT THE OVERALL HEALTH OF YOUR COMMUNITY.



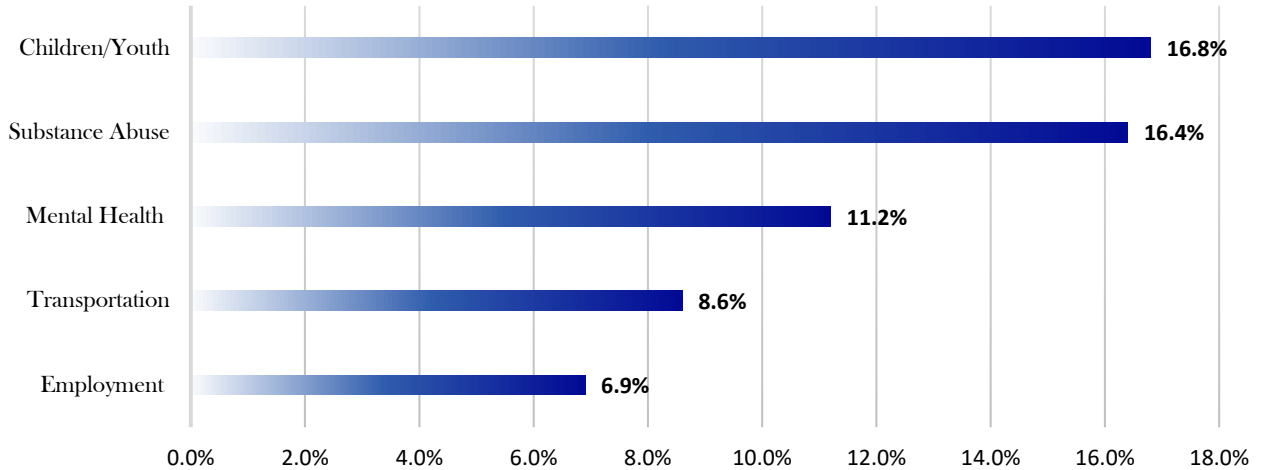
*Other health-related issues that were mentioned by respondents were physical inactivity, unintended pregnancy, COVID-19, and dental health.

PLEASE LIST THE THREE MOST IMPORTANT SOCIAL/ENVIRONMENTAL ISSUES THAT AFFECT THE OVERALL HEALTH OF YOUR COMMUNITY.



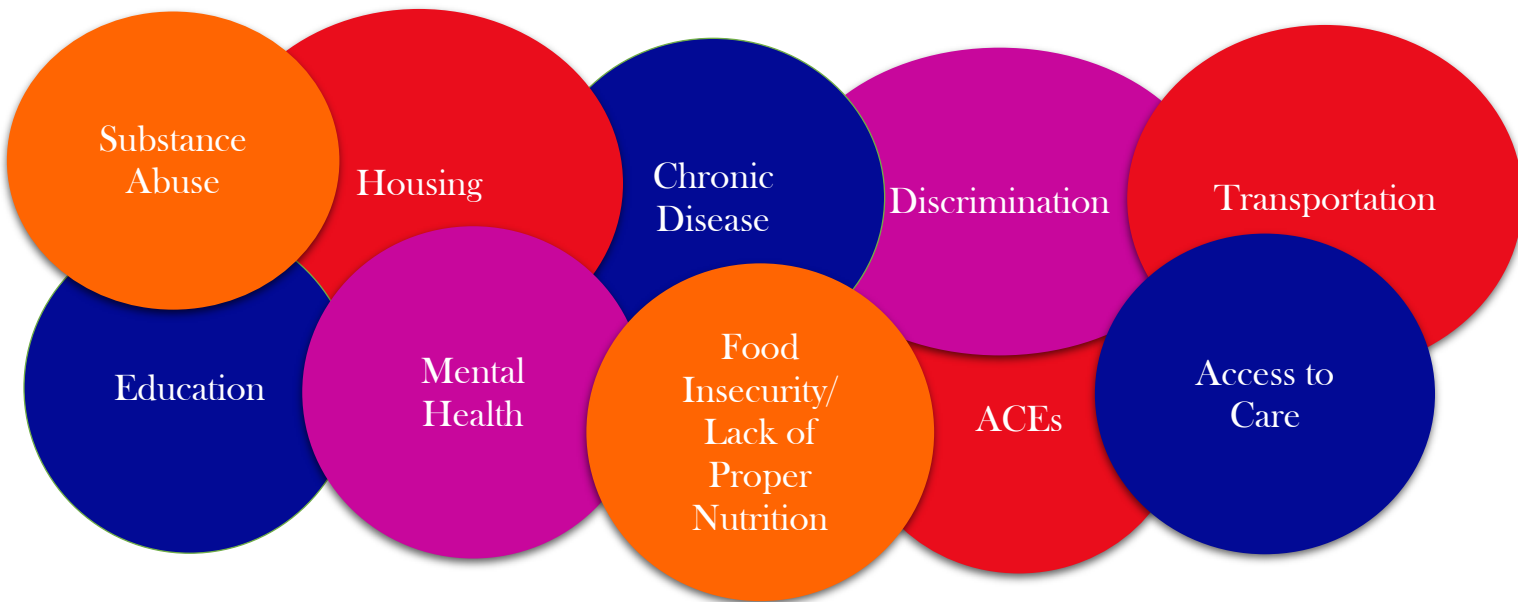
*Other social/environmental issues that were mentioned by respondents were poverty, discrimination, and safe water sources.

FROM THE PERSPECTIVE OF THOSE WHO LIVE IN YOUR COMMUNITY, WHAT ISSUES DO YOU BELIEVE THE RESIDENTS WOULD LIKE TO SEE EFFORTS PRIORITIZED AROUND?



*Other community that were mentioned by respondents were childcare, ACEs, and COVID-19.

From these three survey questions, the top ten community issues identified for Northeast Tennessee communities were found to be the following:



After being presented with the secondary data specific to Unicoi County, focus group participants were asked to vote for three of the ten community issues listed above that they felt should be priority focus areas for future improvement efforts in Unicoi County. The three issues that obtained the majority of the votes were the three priority areas selected and became the focus of the facilitated discussion. For Unicoi County Hospital, the three priority areas for future improvement efforts that were selected by key stakeholders in Unicoi County are **education, mental health, and adverse childhood experiences (ACEs)**. Table 3 below highlights some of the secondary data measures used for both gathering baseline data and measuring change for the three priority areas selected for Unicoi County Hospital.

Table 3	
Priority Focus Area	Sub-Measure
Education	<ul style="list-style-type: none"> ▪ TNReady English Language Arts for 3rd to 8th graders ▪ Highschool Graduation ▪ College Going Rate
Mental Health	<ul style="list-style-type: none"> ▪ Frequent Mental Distress ▪ Suicide Rate
ACEs	<ul style="list-style-type: none"> ▪ Founded Child Abuse/Neglect Cases ▪ Foster Care Entry

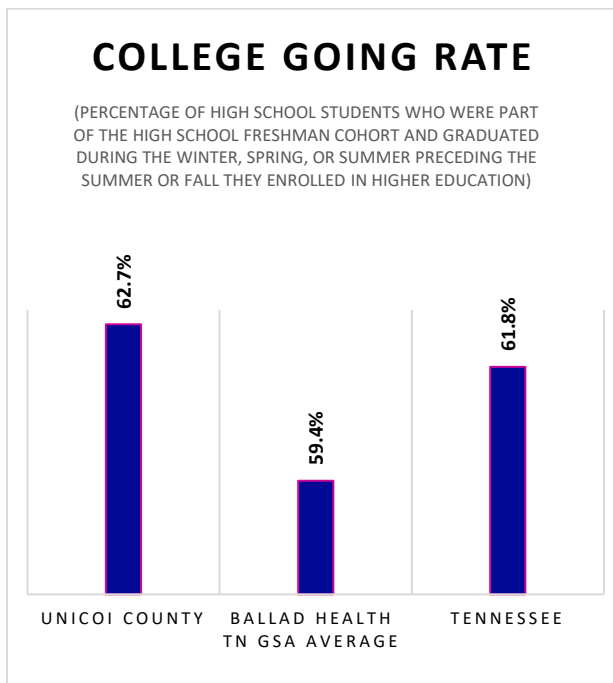
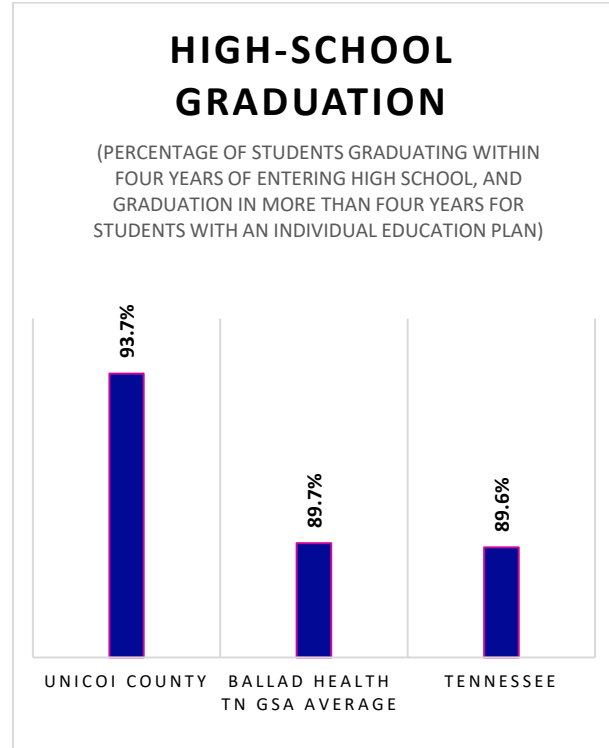
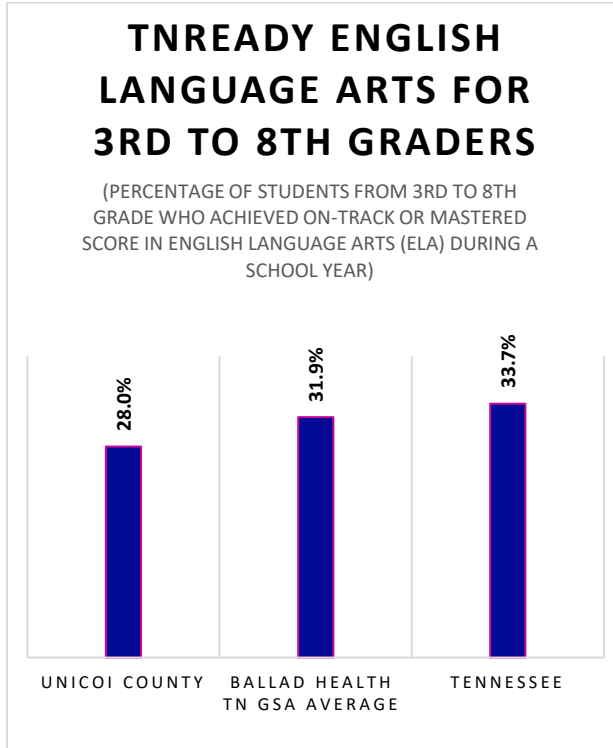
As evidenced by the county-level vs. state-level data represented for each of the priority measures selected by Unicoi County focus group participants, opportunity for improvement exists across all priority measures within the local community. Although not all metrics compare unfavorably to the overall state data, opportunity still exists, as the Tennessee data is not intended as a benchmark, but merely as a comparison. In addition to state-level comparisons, priority measures for Unicoi County are also compared to the average of the Northeast Tennessee counties in Ballad Health’s GSA.

By identifying these priority areas, Unicoi County Hospital, in conjunction with Ballad Health and other local community organizations, can begin to implement targeted programs and efforts to improve the overall health and well-being of citizens of Unicoi County.

5.1 Priority Area Measures with County vs. Ballad Health GSA Average for NE TN

Counties vs. State Comparisons (when applicable):

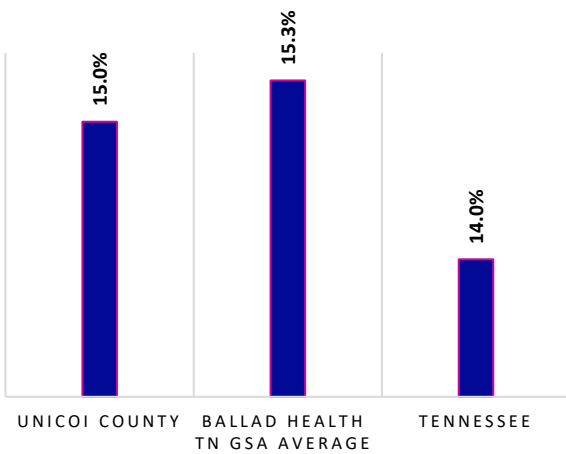
5.1.1 Education



5.1.2 Mental Health

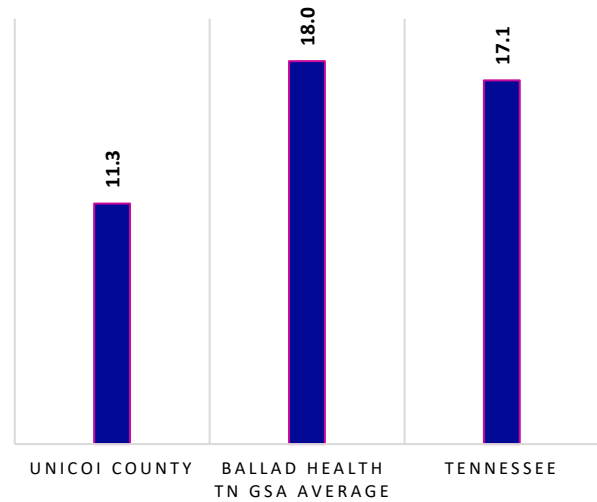
FREQUENT MENTAL DISTRESS

(PERCENTAGE OF ADULTS REPORTING 14 OR MORE DAYS OF POOR MENTAL HEALTH PER MONTH)



SUICIDE

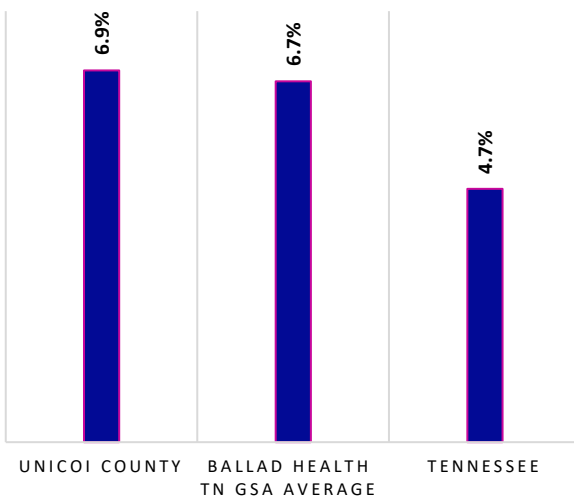
(RATE OF DEATHS FROM SUICIDES PER 100,000 POPULATION)



5.1.3 ACEs

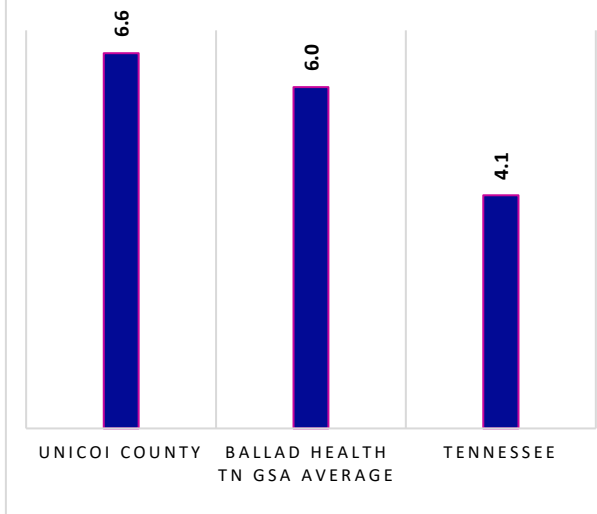
REPORTED CHILD ABUSE CASES

(PERCENTAGE OF REPORTED CHILD ABUSE CASES OUT OF TOTAL CHILD POPULATION)



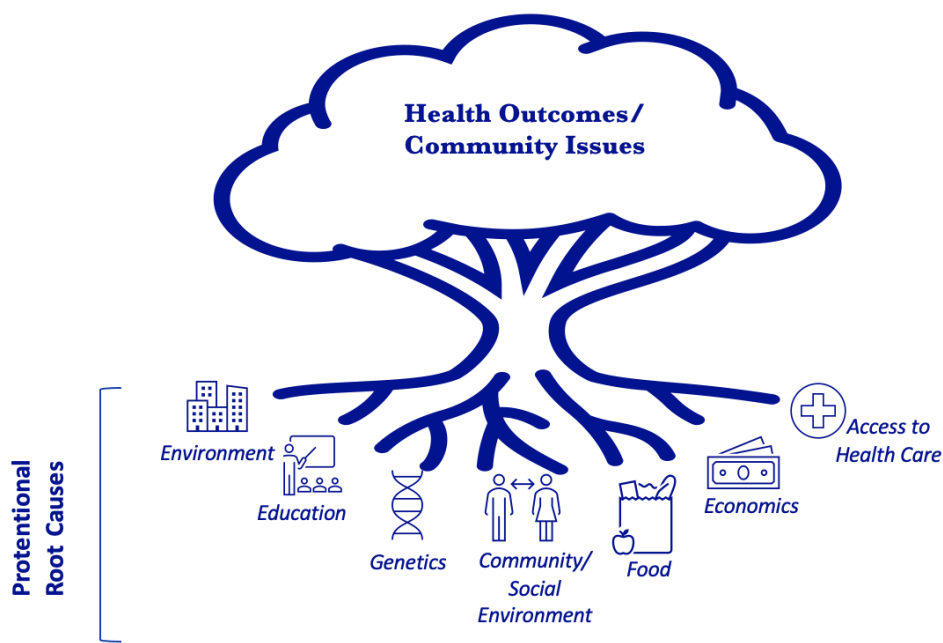
COMMITMENT TO STATE CUSTODY

(RATE OF COMMITMENT TO STATE CUSTODY PER 1,000 CHILDREN)



6 Root Causes of Key Priority Areas

Because health is more than just a result of behaviors or individual pre-disposition to disease, Ballad Health realizes that it must also evaluate social determinants such as the environment and community in which people live, the access to care they have, and the policy issues that exist/are absent in order to be able to make effective strides in improvement. For this reason, **root causes** for each of three priority focus areas were discussed in the focus group to better understand the relationships between various community issues. Utilizing more upstream ways of thinking and better understanding the true root causes of community issues will allow Ballad Health to better understand how to design future efforts and determine which community partners are needed for a collective effort to truly bring about a measurable change.



To help understand the true root causes of three priority focus areas selected for Unicoi County Hospital, participants in the focus group identified the causes they believe must be addressed and accounted for in future improvement efforts in order to truly make impactful progress and change. For this focus group, mental health and ACEs were discussed together due to the close relationship between the two. The identified root causes for the priority focus areas for Unicoi County Hospital include:

6.1 Education:

- Lack of parent involvement
- Truancy
- People homeschooling without adequate training or education
- Parental stress
- Food insecurity

6.2 ACEs/Mental Health:

- Poverty
- Abuse
- Parental Drug Use
- Lack of family structure/Single parent families
- Substance Use
- Physical and emotional neglect

7 Community and Hospital Resources: Current and Needed

7.1 Current Resources

To help improve the identified health priorities for Unicoi County, focus group participants were also asked to help identify **current** programs/organizations/individuals/services from the local community that may be of assistance with the population health efforts in their county. Because multiple resources working together for the same cause can help to drive change faster, having the inventory of local resources with whom Ballad Health can partner with is key. There are many resources currently in existence in Unicoi County through both the hospital and local organizations. The current and available resources identified for each of the three priority focus areas in the focus groups are as follows:

7.1.1 Education:

- Educators in the school system (teacher and staff work very hard to meet the students where they are during the pandemic to ensure their educational needs are met)
- Ayers Foundation provides College Access Counselors (help high school students choose a post-secondary path and assist with necessary steps to get there)

7.1.2 ACEs/Mental Health:

- Community Mental Health Center
- Counselors in school system
- Frontier Health
- Church programs - youth groups and couples counseling

7.2 Needed Resources

In addition to identifying current resources, focus group participants were also asked to identify **needed** resources that **do not** currently exist in their local community that could be of assistance with the population health efforts in their county. The identification of needed resources will help to bridge gaps and overcome barriers to care when addressing these priority focus areas. The needed resources identified for each of the three priority focus areas in the focus groups are as follows:

7.2.1 Education:

- Funding for schools for programs for students and parents
- Volunteers

7.2.2 ACEs/Mental Health

- Volunteers
- Dedicated resources
- Transportation
- Resources to increase access to care

8 Ideas and Suggestions for Future Improvement Efforts to Address Key Priority Areas

8.1 Multi-Sector Ideas and Suggestions for Improvement Efforts

Foundational to any population health improvement effort is the identification of actionable priorities. Now that this has been accomplished, the hospital can begin to formulate targeted implementation plans to help address the disparities plaguing parts of its population. By identifying these priority areas, Unicoi County Hospital in conjunction with Ballad Health and other local community organizations can begin to implement targeted programs and efforts to improve the overall health and well-being of citizens of Unicoi County. To best plan for and design improvement efforts that address the three priority focus areas, focus group participants offered ideas and suggestions for potential improvement efforts and solutions that can be incorporated into the Community Health Needs Assessment Implementation Plan for Unicoi County Hospital. Focus group participants were not asked to formulate entire initiatives or improvement efforts, but were instead asked to offer ideas and suggestions for crucial elements to be included in a larger, overarching improvement effort. The ideas and suggestions for potential improvement efforts for each of the three priority areas are as follows:

8.1.1 Education:

- New policy concerning a parent choosing to homeschool their child (if parents get upset with the school, parents can pull the students immediately to homeschool; there used to be a state policy that said this decision had to be made at the beginning of the year, but that no longer exists; students often fall behind academically if parents do not follow homeschooling guidelines)

8.1.2 ACEs/Mental Health:

- Big Brother Programs
- Support for single parents

8.2 Ideas and Suggestions for Improvement Efforts Specific to Ballad Health and Unicoi County Hospital

In addition to discussing ideas and suggestions for protentional improvement efforts, the focus group participants also discussed possibilities for how Unicoi County Hospital and Ballad Health can continue or enhance programs/services to provide local resources to support the identified priorities and best be a community partner in future improvement efforts. Several of the ideas and suggestions for potential improvement efforts for each of the priority areas were repeated by focus group participants again here, signifying that the participants believe Ballad Health and Unicoi County Hospital should either lead or be largely involved in the improvement effort. Suggestions as to how Ballad Health and Unicoi County Hospital can improve the previously identified priority focus areas are listed below:

8.2.1 Education:

- ASPIRE Book Bus
- Backpack program/school nutrition delivery services
- Re-start Bear Buddies Program
- Incentive programs for children, teachers, and parents

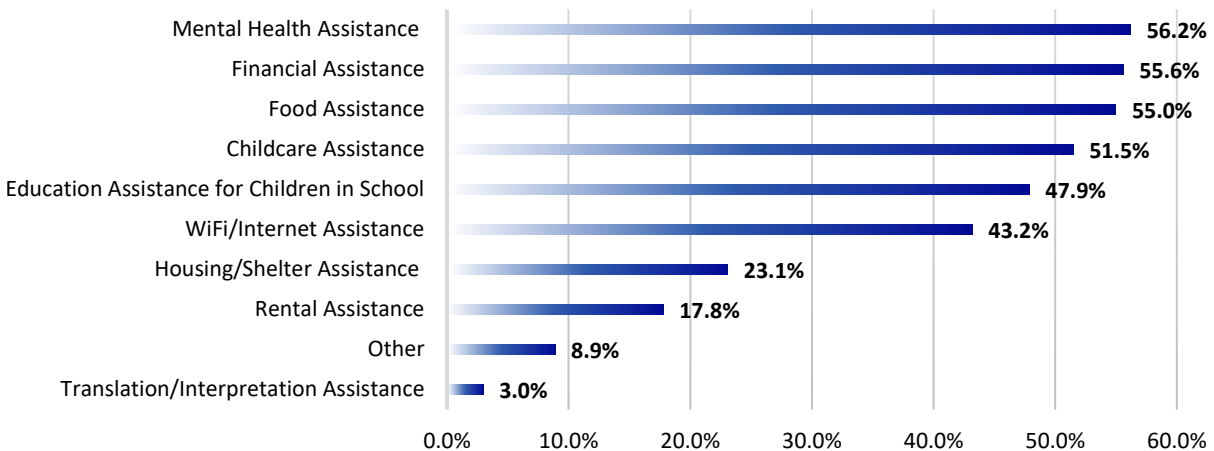
8.2.2 ACEs/Mental Health:

- Start education for parents at the birth of children
- Home health visits for new moms
- Ballad sponsored community programs

9 COVID-19 Pandemic

Ballad Health fully understands the toll the COVID-19 Pandemic had on our communities and health care system. In both the key stakeholder survey and key stakeholder focus groups, Ballad Health wanted to reflect and better understand how communities have struggled in light of the pandemic through understanding what types of services and assistance were needed most by communities. This information obtained by the community will allow Ballad Health to best plan for barriers to future improvement efforts, as communities are still suffering from the effects of the pandemic. From the key stakeholder survey, the types of assistance needed most by communities due to COVID-19 are shown below. The percentages on the bar graphs represent the percentage of Northeast Tennessee respondents who selected that particular type of assistance.

AS A RESULT OF COVID-19, WHICH OF THE FOLLOWING SERVICES OR TYPES OF ASSISTANCE HAVE BEEN NEEDED MOST BY THE THOSE WITHIN YOUR COMMUNITY? (PLEASE SELECT YOUR TOP 3)



In the key stakeholder focus groups, participants were asked to detail how they felt the COVID-19 pandemic would affect the community's ability to address any of the three priority areas. Focus group participants mentioned that the pandemic has cut off in-person contact with vulnerable populations, which has exacerbated existing problems. It was crucial to focus group participants that future efforts to address the three priority focus areas acknowledge the strains that have been placed on the community and account for the negative consequences of the pandemic as communities continue to heal.


10 Conclusion

As hospitals and health systems continue to work to make the communities they serve healthier, the identification of prioritized population health issues has become an area of strategic importance. Because Unicoi County Hospital is located in a region with many health and social challenges, that prioritization becomes even more important so that focused actions can be developed and implemented with strategic purpose. The allocation of hospital resources to the prioritized issues, coupled with partnerships with other community organizations, will continue to build momentum toward the building of a healthier Unicoi County.

11 Appendix

11.1 Sg2 2021 Population Profile

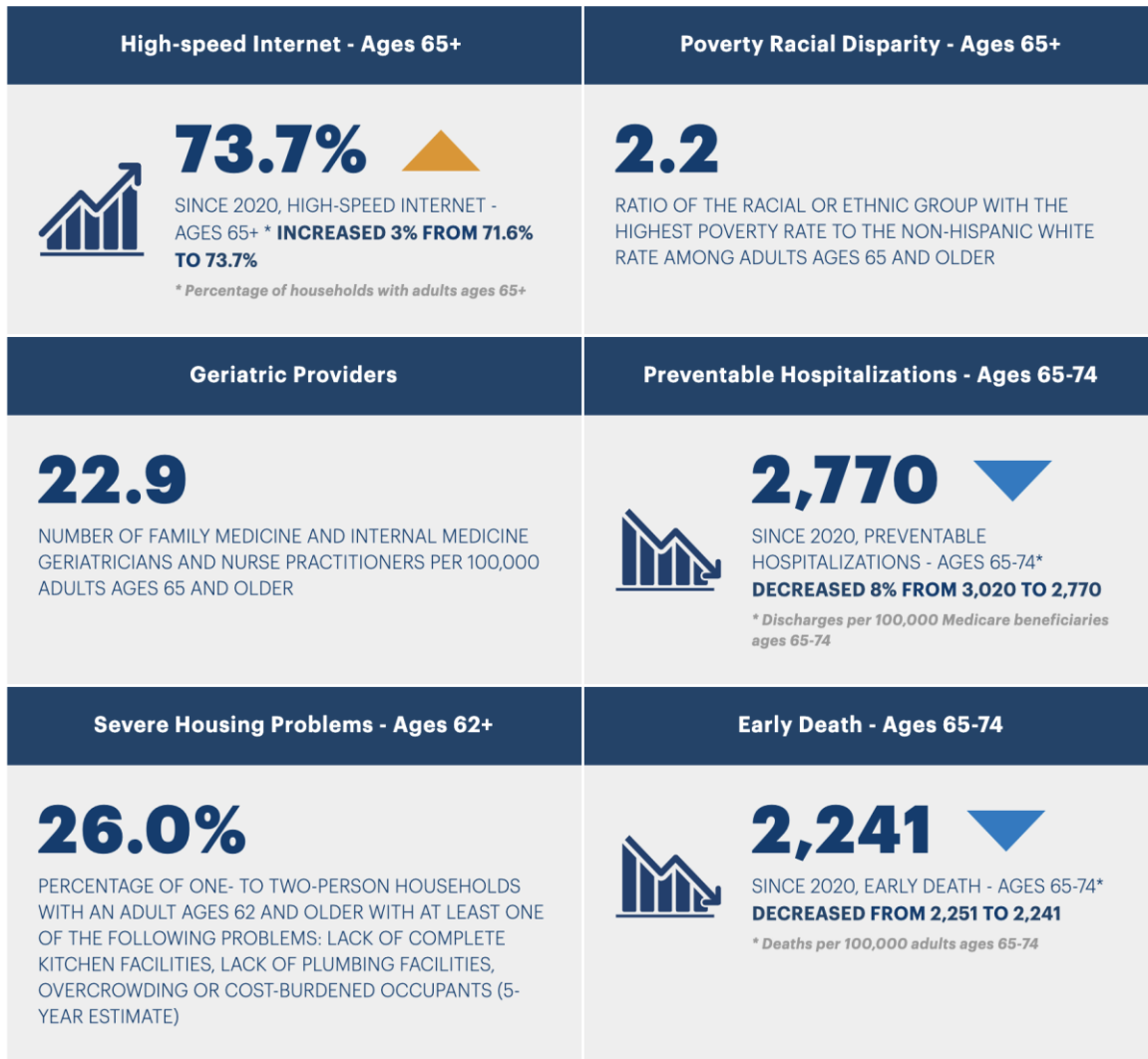
The table below highlights key demographic statistics for Unicoi County, TN:

Sg2 MARKET SNAPSHOT						
						
Market Snapshot						
Unicoi County, TN						
Population and Gender	Market 2021 Population	Market 2021 % of Total	Market 2026 Population	Market 2026 % of Total	Market Population % Change	National 2021 % of Total
Female Population	9,133	50.86%	9,215	50.84%	0.90%	50.75%
Male Population	8,823	49.14%	8,909	49.16%	0.97%	49.25%
Total	17,956	100.00 %	18,124	100.00 %	0.94 %	100.00 %
Age Groups	Market 2021 Population	Market 2021 % of Total	Market 2026 Population	Market 2026 % of Total	Market Population % Change	National 2021 % of Total
00-17	3,235	18.02%	3,091	17.05%	(4.45 %)	22.17%
18-44	5,254	29.26%	5,274	29.10%	0.38%	35.64%
45-64	5,057	28.16%	4,835	26.68%	(4.39 %)	25.13%
65-UP	4,410	24.56%	4,924	27.17%	11.66%	17.06%
Total	17,956	100.00 %	18,124	100.00 %	0.94 %	100.00 %
Ethnicity/Race	Market 2021 Population	Market 2021 % of Total	Market 2026 Population	Market 2026 % of Total	Market Population % Change	National 2021 % of Total
Asian & Pacific Is. Non-Hispanic	51	0.28%	60	0.33%	17.65%	6.05%
Black Non-Hispanic	84	0.47%	108	0.60%	28.57%	12.40%
Hispanic	1,004	5.59%	1,174	6.48%	16.93%	19.24%
White Non-Hispanic	16,547	92.15%	16,476	90.91%	(0.43 %)	58.97%
All Others	270	1.50%	306	1.69%	13.33%	3.34%
Total	17,956	100.00 %	18,124	100.00 %	0.94 %	100.00 %
Language*	Market 2021 Population	Market 2021 % of Total	Market 2026 Population	Market 2026 % of Total	Market Population % Change	National 2021 % of Total
Chinese at Home	29	0.17%	29	0.17%	0.00%	1.25%
French at Home	26	0.15%	25	0.14%	(3.85 %)	0.75%
Germanic Lang at Home	60	0.35%	60	0.35%	0.00%	0.74%
Only English at Home	16,096	93.88%	16,262	93.88%	1.03%	76.50%
Spanish at Home	910	5.31%	921	5.32%	1.21%	14.95%
All Others	24	0.14%	26	0.15%	8.33%	5.81%
Total	17,145	100.00 %	17,323	100.00 %	1.04 %	100.00 %
Household Income	Market 2021 Households	Market 2021 % of Total	Market 2026 Households	Market 2026 % of Total	Market Households % Change	National 2021 % of Total
<\$15K	1,121	14.87%	1,032	13.58%	(7.94 %)	9.67%
\$15-25K	1,081	14.34%	1,061	13.97%	(1.85 %)	8.29%
\$25-50K	2,055	27.27%	2,019	26.58%	(1.75 %)	20.27%
\$50-75K	1,368	18.15%	1,353	17.81%	(1.10 %)	16.57%
\$75-100K	873	11.58%	902	11.87%	3.32%	12.46%
\$100K-200K	916	12.15%	1,083	14.26%	18.23%	23.23%
>\$200K	123	1.63%	147	1.93%	19.51%	9.51%
Total	7,537	100.00 %	7,597	100.00 %	0.80 %	100.00 %
Education Level**	Market 2021 Population	Market 2021 % of Total	Market 2026 Population	Market 2026 % of Total	Market Population % Change	National 2021 % of Total
Less than High School	854	6.39%	872	6.39%	2.11%	5.05%
Some High School	1,179	8.83%	1,218	8.93%	3.31%	6.83%
High School Degree	5,415	40.53%	5,544	40.63%	2.38%	26.95%
Some College/Assoc. Degree	3,992	29.88%	4,063	29.78%	1.78%	31.05%
Bachelor's Degree or Greater	1,919	14.36%	1,948	14.28%	1.51%	30.12%
Total	13,359	100.00 %	13,645	100.00 %	2.14 %	100.00 %

*Excludes population age<5, **Excludes population age<25

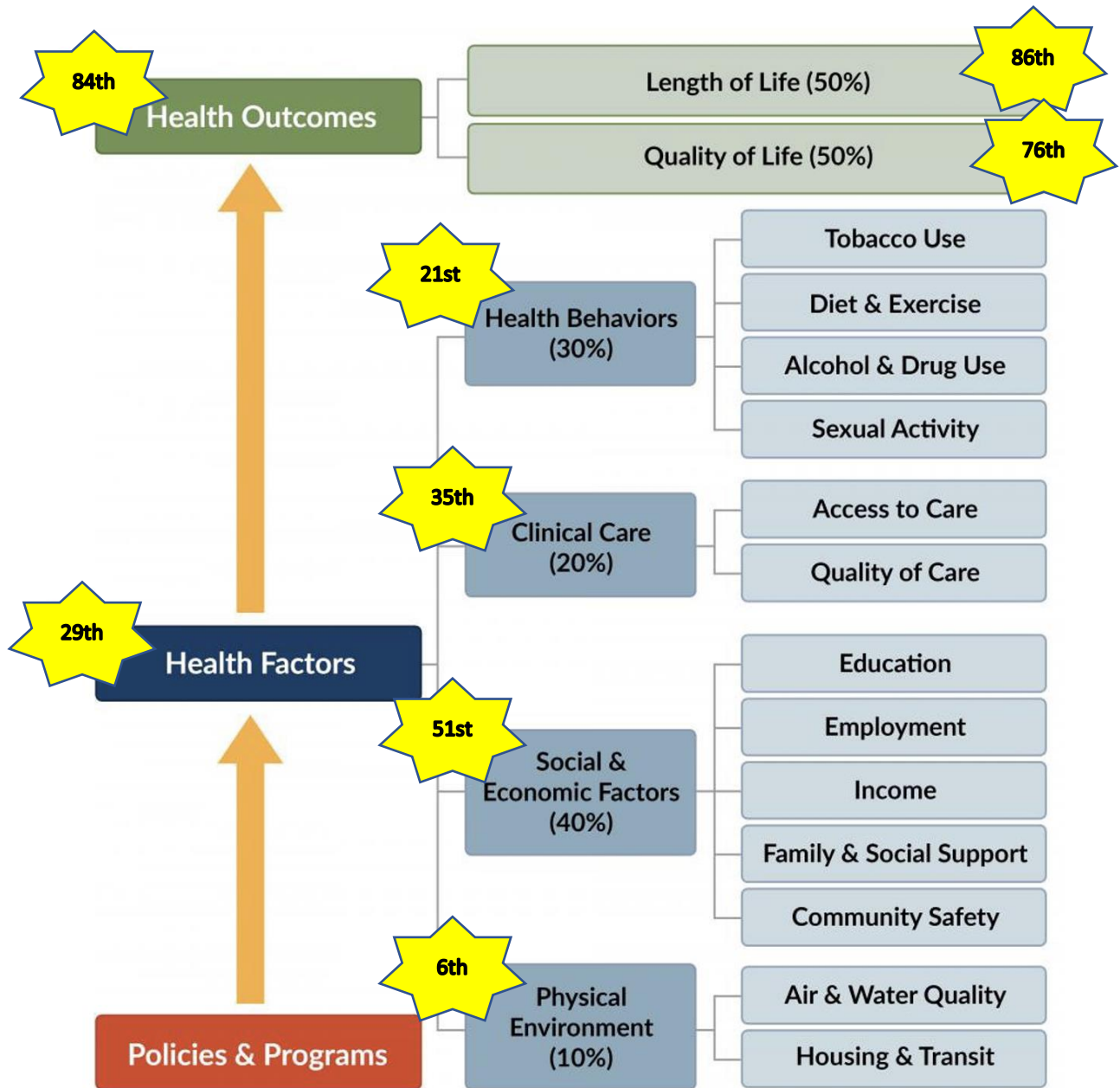
11.2 America's Health Rankings Graphic

The infographic below summarizes strength and challenges for the state of Tennessee in 2020:



11.3 County Health Rankings Graphic

The infographic below shows the 2021 rankings for Unicoi County for each of the County Health Ranking model components out of the 95 Tennessee counties.



County Health Rankings model © 2014 UWPHI

11.4 Secondary Data Tables

The seven data tables below showcase the secondary data metrics compiled for Unicoi County, TN. Metric definitions, the associated metric value for Tennessee, and data source reference are also included in the tables.

Health Outcomes						
Metric	Metric Definition	Unicoi County	Ballad Health GSA Average	Ballad Health TN GSA Average	Tennessee	Reference
Infant Mortality	Number of infant deaths (under one year of age) per 1,000 live births	5.7	6.9	7.2	6.9	Tennessee Commission on Children & Youth
Low Birthweight	Percentage of live born infants with birth weight less than 5 pounds, 8 ounces	8.0%	9.3%	8.3%	9.3%	Kids Count
Children with NAS	Rate of NAS cases per 1,000 live births	68.6	64.4	43.8	11.5	Tennessee Commission on Children & Youth
Poor or Fair Health	Percentage of adults reporting fair or poor health (age-adjusted)	22.0%	18.7%	22.4%	20.0%	County Health Rankings
Cardiovascular Deaths	Rate of deaths from diseases of the heart per 100,000 population	417.0	527.8	347.7	242.5	Tennessee Department of Health
Cancer Deaths	Number of cancer deaths (all sites) per 100,000 population	202.1	192.7	189.6	177.4	CDC
Diabetes Mellitus Deaths	Rate of deaths from diabetes per 100,000 population	11.3	32.4	33.6	29.9	Tennessee Department of Health
Cerebrovascular Deaths	Rate of deaths from cerebrovascular disease per 100,000 population	50.7	73.2	55.5	51.7	Tennessee Department of Health
Suicide Rate	Rate of deaths from suicides per 100,000 population	11.3	22.5	18.0	17.1	Tennessee Department of Health
Lung Cancer Deaths	Number of lung and bronchus cancer deaths per 100,000 population	54.0	57.8	58.7	51.3	CDC
Female Breast Cancer Deaths	Number of female breast cancer deaths per 100,000 women	30.6	21.7	20.7	22.0	CDC
Prevalence of Diabetes	Percentage of adults aged 20 and above with diagnosed diabetes	19.0%	15.2%	17.1%	13.0%	County Health Rankings
Mammography Screening	Percentage of female Medicare enrollees ages 65-74 that received an annual mammography screening	42.0%	40.1%	41.5%	41.0%	County Health Rankings
Frequent Mental Distress	Percentage of adults reporting 14 or more days of poor mental health per month	15.0%	13.8%	15.3%	14.0%	County Health Rankings
Premature Deaths	Number of deaths among residents under age 75 per 100,000 population (age-adjusted)	560.0	526.4	535.0	450.0	County Health Rankings

Health Behaviors

Metric	Metric Definition	Unicoi County	Ballad Health GSA Average	Ballad Health TN GSA Average	Tennessee	Reference
Alcohol-Impaired Driving Deaths	Percentage of driving deaths with alcohol involvement	67.0%	22.0%	37.0%	25.0%	County Health Rankings
Excessive Drinking	Percentage of adults reporting binge or heavy drinking	13.0%	16.4%	13.2%	14.0%	County Health Rankings
Adult Smoking	Percentage of adults who are current smokers	22.0%	19.0%	22.8%	23.0%	County Health Rankings
Adult Obesity	Percentage of the adult population (age 20 and older) that reports a body mass index (BMI) greater than or equal to 30 kg/m2	33.0%	33.6%	33.8%	33.0%	County Health Rankings
TN Public School Students Measured as Overweight or Obese	Percentage of public school students who were measured as overweight or obese	44.0%		45.3%	39.3%	Tennessee Commission on Children & Youth
Physical Inactivity	Percentage of adults age 20 and over reporting no leisure-time physical activity	22.0%	60.3%	30.1%	27.0%	County Health Rankings
Access to Exercise Opportunities	Percentage of population with adequate access to locations for physical activity	100.0 %	33.3%	63.8%	70.0%	County Health Rankings
Teen Births	Number of live births per 1,000 females aged 15-17 years old	16.9	8.9	11.2	9.6	Kids Count
Drug Overdose Deaths	Rate of drug overdose deaths per 100,000 Tennesseans	Count less than 10	14.9		27.0	Tennessee Department of Health
Nonfatal Drug Overdose	Rate of inpatient stays involving non-fatal drug overdose per 100,000 Tennesseans	159.0	162.9	133.3	102.0	Tennessee Department of Health
Opioid Prescription	Rate of opioid prescriptions per 1,000 Tennesseans (at least one opioid for pain prescription)	1,357.0	17.6	1091.8	793.0	Tennessee Department of Health
Violent Crime	Number of reported violent crime offenses per 100,000 population	251.0	14.5	376.3	621.0	County Health Rankings
Firearm Fatalities	Number of deaths due to firearms per 100,000 population	17.0		15.8	17.0	County Health Rankings
Motor Vehicle Crash Deaths	Number of motor vehicle crash deaths per 100,000 population	18.0		18.2	15.0	County Health Rankings

Health Determinants

Metric	Metric Definition	Unicoi County	Ballad Health GSA Average	Ballad Health TN GSA Average	Tennessee	Reference
Uninsured Adults	Percentage of adults under age 65 without health insurance	15.0%	13.6%	14.6%	14.0%	County Health Rankings
Uninsured Children	Percent of uninsured children under the age of 19	4.9%	5.3%	4.7%	5.1%	Kids Count
Median Household Income	The income where half of households in a county earn more and half of households earn less	\$43,700	\$40,863	\$41,140	\$52,400	County Health Rankings
Children Eligible for Free or Reduced Lunch	Percentage of students who are eligible for the free or reduced-price meals program during a school year	67.3%	56.8%	71.6%	62.1%	Kids Count
Children in Single-Parent Household	Percentage of children that live in a household headed by single parent	36.0%	34.8%	34.5%	35.0%	County Health Rankings
Children In Poverty	Percent of children under age 18 living with an income below the official poverty threshold	22.3%	25.3%	28.0%	19.4%	Kids Count
High School Graduation	Percentage of students graduating within four years of entering high school, and graduation in more than four years for students with an Individual Education Plan	93.7%	55.1%	89.7%	89.6%	Kids Count
College Going Rate	Percentage of high school students who were part of the high school freshman cohort and graduated during the winter, spring, or summer preceding the summer or fall they enrolled in higher education	62.7%	94.4%	59.4%	61.8%	Kids Count
College Enrollment/Completion	Exact data definition not provided by source	64.9%	4.0%	64.0%	62.5%	Tennessee Commission on Children & Youth
Unemployment	Percentage of population ages 16 and older unemployed but seeking work	4.9%	11.9%	4.2%	3.5%	County Health Rankings
Food Insecurity	Percentage of population who lack adequate access to food	14.0%	80.4%	13.9%	14.0%	County Health Rankings
TNReady English Language Arts for 3rd to 8th graders	Percentage of students from 3rd to 8th grade who achieved on-track or mastered score in English Language Arts (ELA) during a school year	28.0%	5.0%	31.9%	33.7%	Kids Count

Physical Environment						
Metric	Metric Definition	Unicoi County	Ballad Health GSA Average	Ballad Health TN GSA Average	Tennessee	Reference
Severe Housing Problems	Percentage of households with at least 1 of 4 housing problems: overcrowding, high housing costs, lack of kitchen facilities, or lack of plumbing facilities	12.0%	11.6%	13.1%	15.0%	County Health Rankings
Median Home Sale Price	The home sale price where half of homes in a county sell for more and half of homes sell for less	\$125,000	\$132,548	\$128,501	\$146,000	Tennessee Commission on Children & Youth
Air Pollution - particulate matter	Average daily density of fine particulate matter in micrograms per cubic meter (PM2.5)	8.8	9.4	9.7	10.0	County Health Rankings

Clinical Care and Health Resources						
Metric	Metric Definition	Unicoi County	Ballad Health GSA Average	Ballad Health TN GSA Average	Tennessee	Reference
Hospital Staffed Beds	Total number of hospital staffed beds available (in the Ballad Health system for county data)	10			19,756	Tennessee Department of Health
Licensed Beds	Total number of licensed beds available (in the Ballad Health system for county data)	10			24,649	Tennessee Department of Health
Medical Doctors	Rate of medical doctors per 100,000 residents	28.2		103	229.1	Tennessee Commission on Children & Youth
Mental Health Providers	Ratio of population to mental health providers	5,920:1			660:1	County Health Rankings
Dentists	Rate of dentists per 100,000 residents	16.9		26	50.1	Tennessee Commission on Children & Youth
Preventable Hospital Stays	Rate of hospital stays for ambulatory-care sensitive conditions per 100,000 Medicare enrollees	6,373	5,829	5,064	5,320	County Health Rankings
Flu Vaccinations	Percentage of fee-for-service (FFS) Medicare enrollees that had an annual flu vaccination	41.0%	43.8%	41%	49.0%	County Health Rankings
Medicaid Enrollees	Percent of population enrolled in TennCare	23.1%	34.8%	24%	20.7%	Kids Count
Food Stamp Eligible Participants	Percent of population who receive food stamps under SNAP	15.9%		18%	13.4%	Kids Count
Children on SNAP	Percent of children on SNAP out of total child population	32.1%		35%	28.2%	Tennessee Commission on Children & Youth
Infants and Children on WIC	Percent of infants on WIC out of total infant population	55.1%		48%	30.6%	Tennessee Commission on Children & Youth

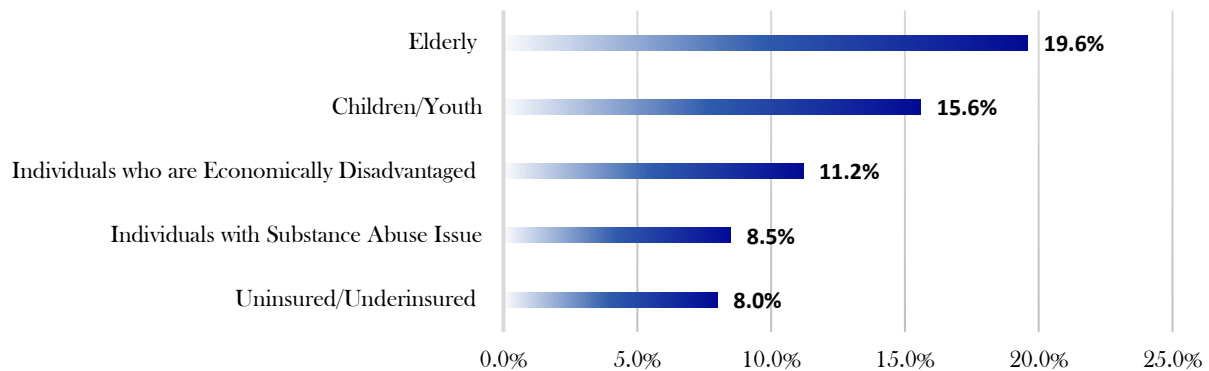
Maternal Infant Health						
Metric	Metric Definition	Unicoi County	Ballad Health GSA Average	Ballad Health TN GSA Average	Tennessee	Reference
Birth Rate	Number of births per 1,000 women ages 15-44	9.9	58.8	10.2	11.9	Tennessee Commission on Children & Youth
Adequate Prenatal Care	Percent of live births in a given calendar year where mother received adequate prenatal care	52.0%	41.0%	56.1%	58.8%	Tennessee Commission on Children & Youth
Mothers Who Smoke During Pregnancy	Percent of total births for which the mother indicated she smoked while pregnant	27.4%		25.2%	12.1%	Tennessee Commission on Children & Youth

Adverse Childhood Experiences						
Metric	Metric Definition	Unicoi County	Ballad Health GSA Average	Ballad Health TN GSA Average	Tennessee	Reference
Reported Child Abuse Cases	Percentage of reported child abuses cases out of total child population	6.9%		6.7%	4.7%	Tennessee Commission on Children & Youth
Commitment to State Custody	Rate of commitment to state custody per 1,000 children	6.6	4.4	6.0	4.1	Tennessee Commission on Children & Youth

11.5 Survey Question Data

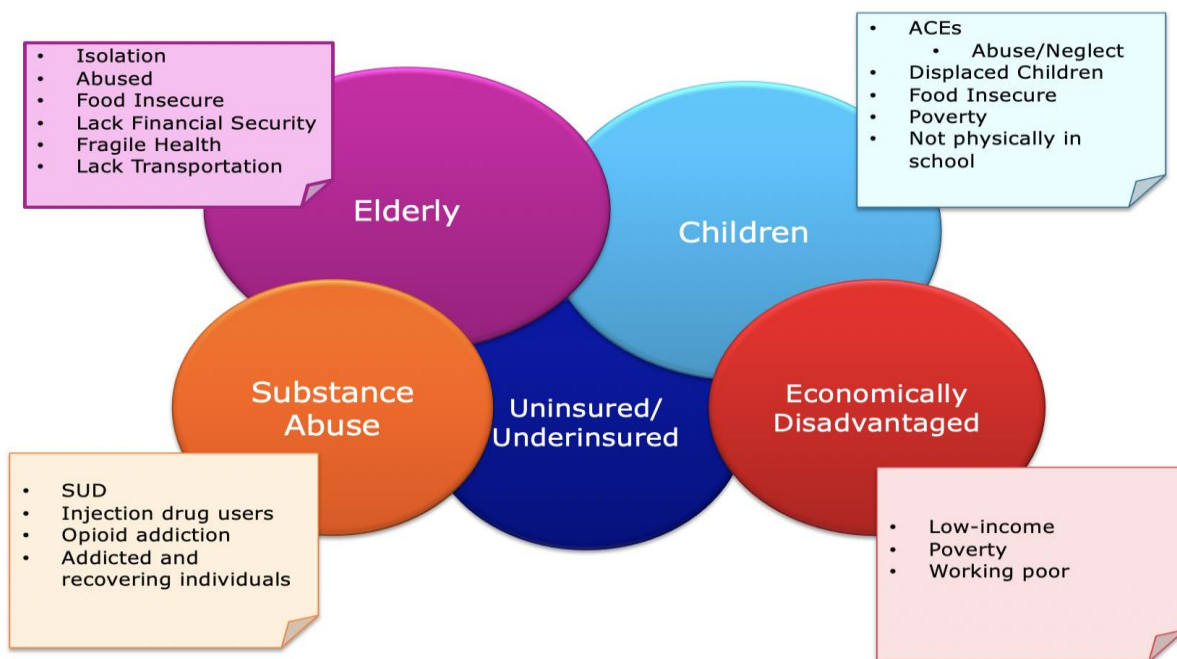
The first two questions (Q1 and Q2) on the key stakeholder survey were used to identify the service area of the respondent and determine what organization they were representing. Findings from Northeast Tennessee respondents for questions three through thirteen (Q1 - Q13) are given below:

Q3) WHEN THINKING OF THE HEALTH OF YOUR COMMUNITY, WHAT VULNERABLE POPULATIONS DO YOU THINK DESERVE OUR PARTICULAR ATTENTION?

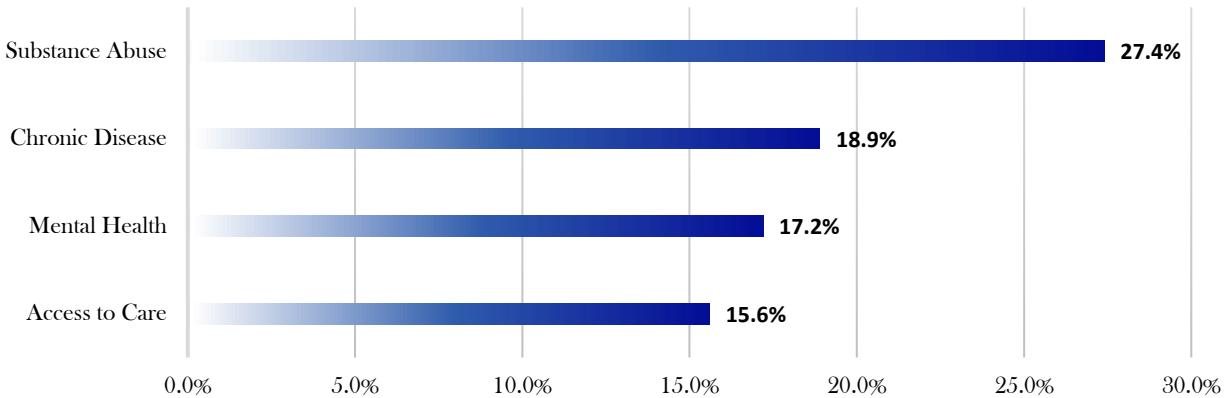


*Other vulnerable populations that were mentioned by respondents were homeless individuals, veterans, maternal women, and marginalized populations.

Below are some of the specifics given by survey respondents for each of the vulnerable populations listed above:

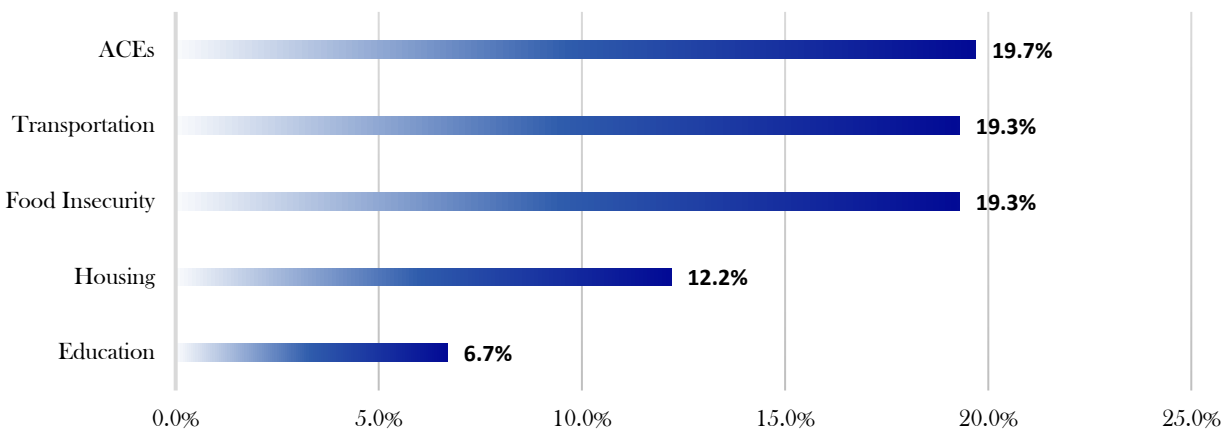


Q4) PLEASE LIST THE THREE MOST IMPORTANT HEALTH-RELATED ISSUES THAT AFFECT THE OVERALL HEALTH OF YOUR COMMUNITY.



*Other health-related issues that were mentioned by respondents were physical inactivity, unintended pregnancy, COVID-19, and dental health.

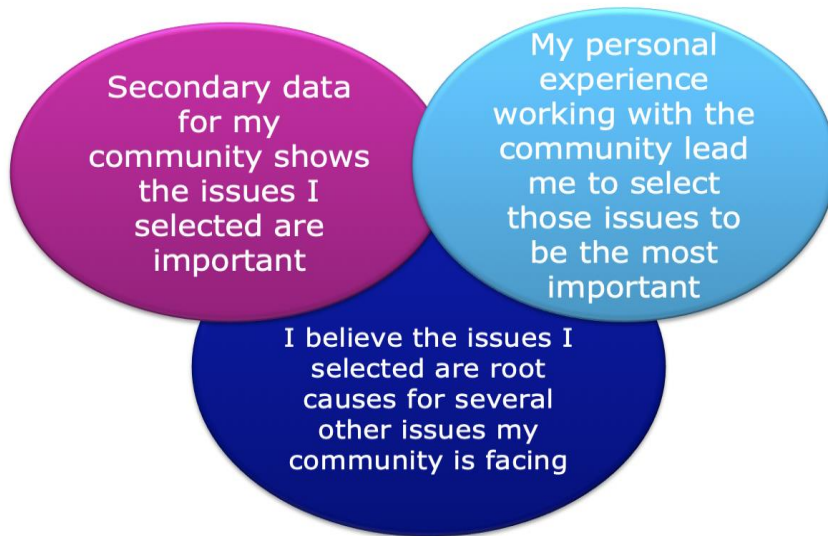
Q6) PLEASE LIST THE THREE MOST IMPORTANT SOCIAL/ENVIRONMENTAL ISSUES THAT AFFECT THE OVERALL HEALTH OF YOUR COMMUNITY.



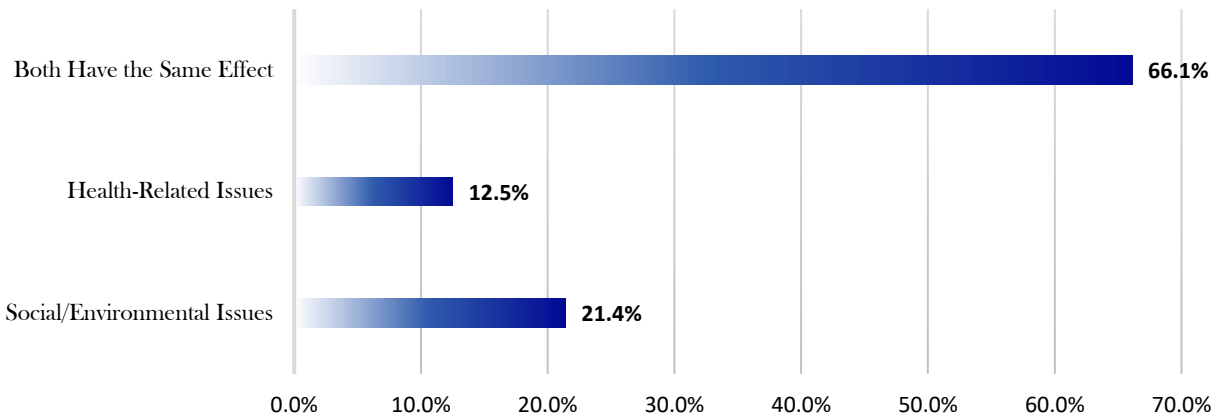
*Other social/environmental issues that were mentioned by respondents were poverty, discrimination, and safe water sources.

Q5 and Q7) PLEASE ELABORATE ON WHY YOU SELECTED THOSE THREE HEALTH-RELATED AND SOCIAL/ENVIRONMENTAL ISSUES TO BE THE MOST IMPORTANT.

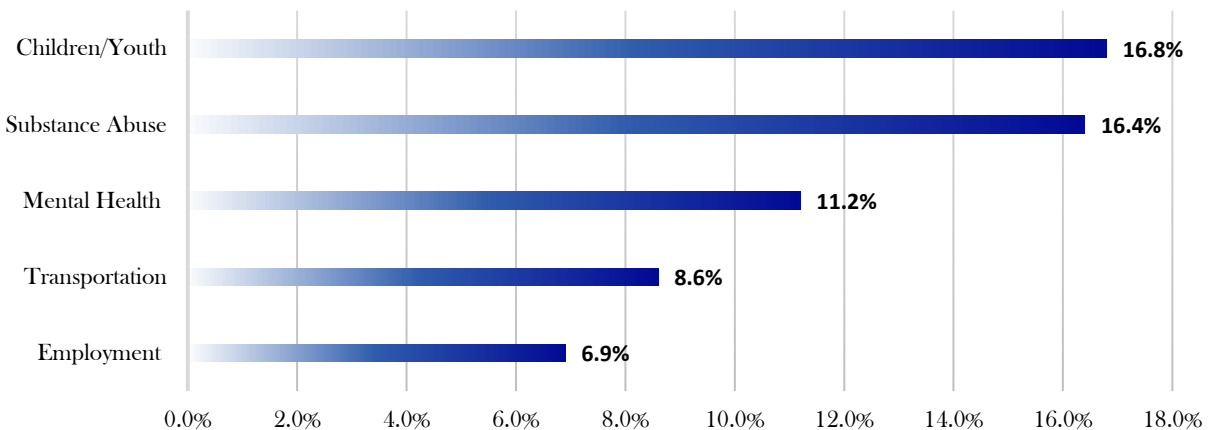
Three overarching themes were identified:



Q8) BASED ON YOUR ANSWERS TO BOTH QUESTION 4 AND QUESTION 6, WHICH DO YOU FEEL HAS A GREATER EFFECT ON THE OVERALL HEALTH OF YOUR COMMUNITY?



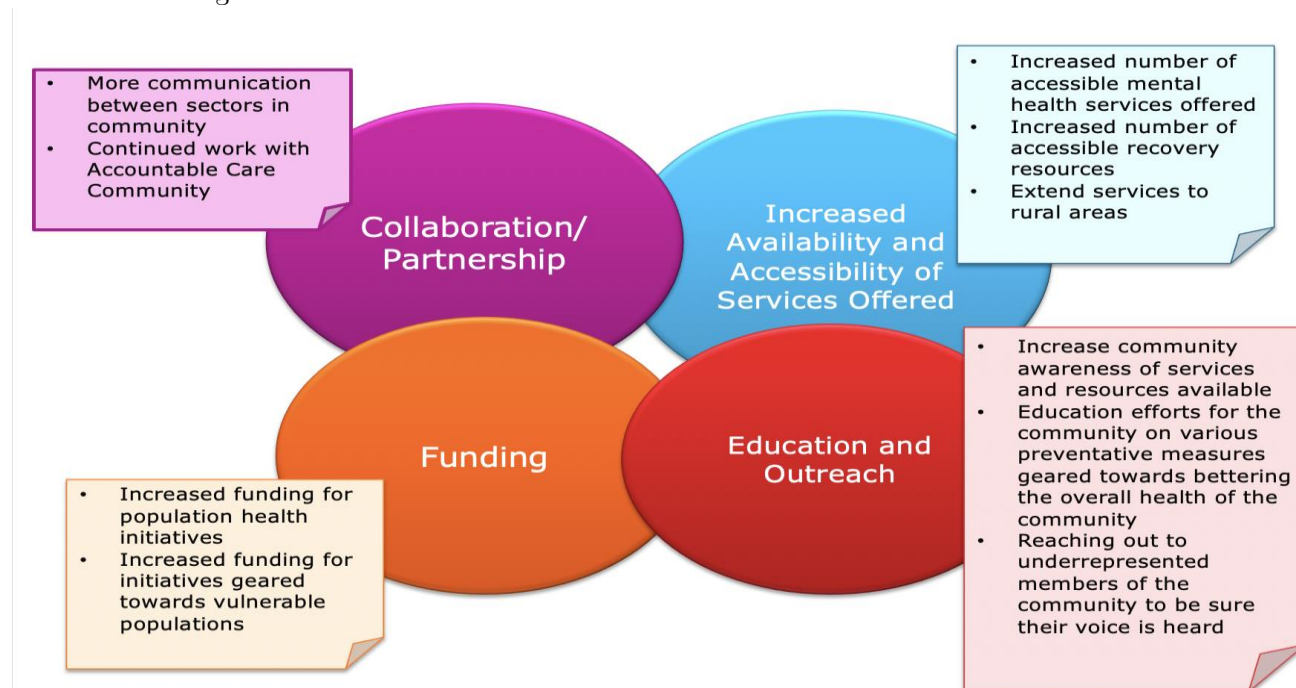
Q9) FROM THE PERSPECTIVE OF THOSE WHO LIVE IN YOUR COMMUNITY, WHAT ISSUES DO YOU BELIEVE THE RESIDENTS WOULD LIKE TO SEE EFFORTS PRIORITIZED AROUND?



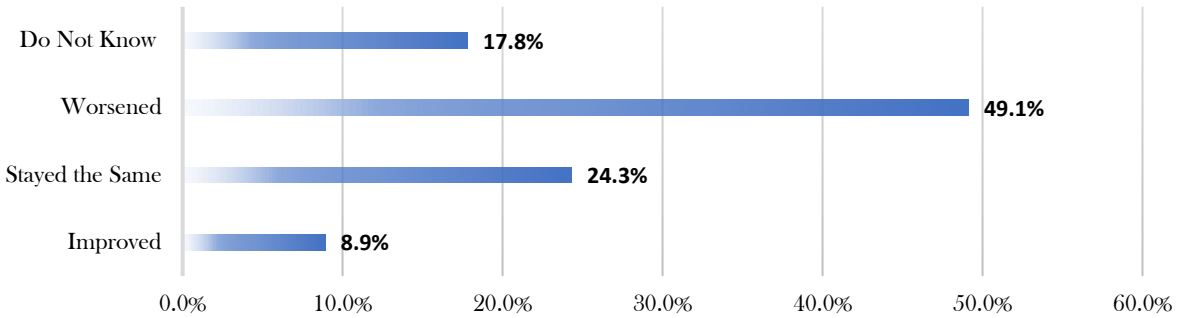
*Other community concerns that were mentioned by respondents were education, housing, ACEs, COVID-19, and food insecurity.

Q10) WHAT IDEAS OR SUGGESTIONS DO YOU HAVE TO IMPROVE THE OVERALL HEALTH OF YOUR COMMUNITY?

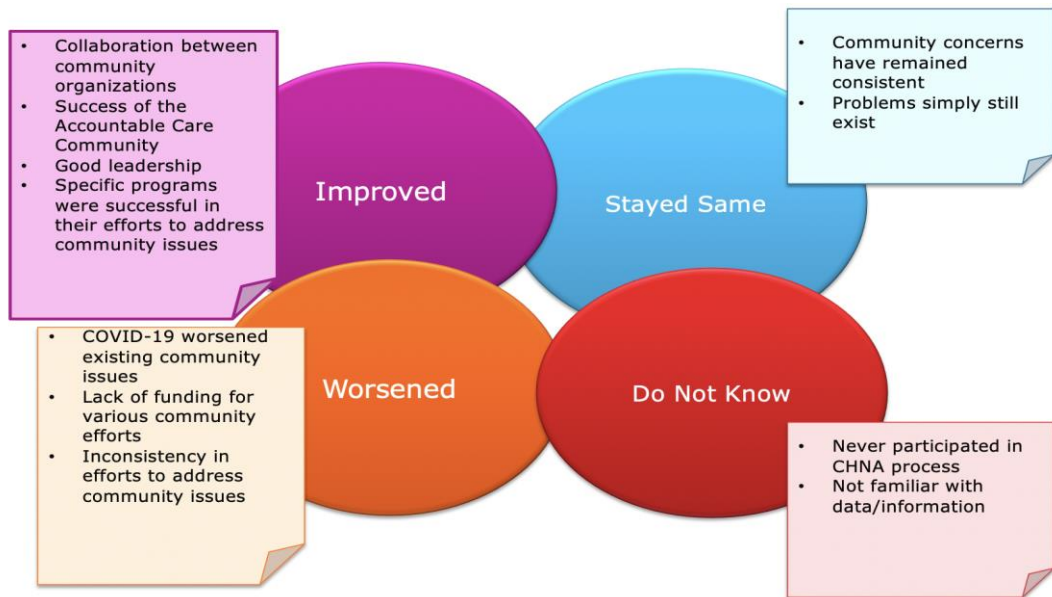
Four overarching themes were identified:



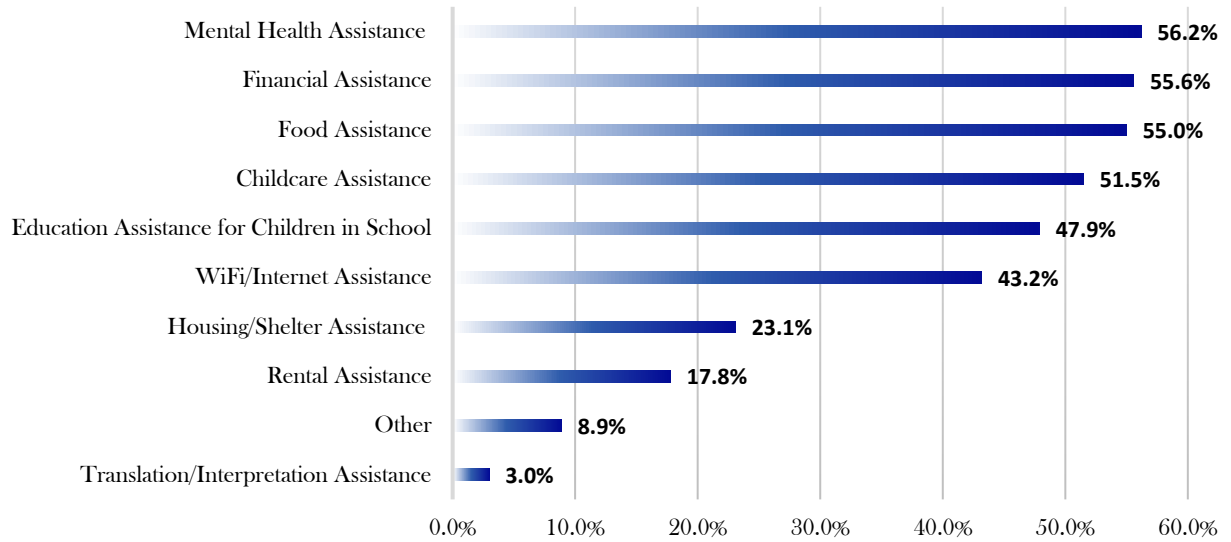
Q11) BASED ON THE PRIORITIES IDENTIFIED IN PREVIOUS COMMUNITY ASSESSMENTS, DO YOU FEEL AS THOUGH THINGS HAVE IMPROVED, STAYED THE SAME, OR WORSENERD?



Q12) BASED ON YOUR ANSWER TO THE PREVIOUS QUESTION, PLEASE ELABORATE ON WHY YOU SELECTED THE ANSWER YOU CHOSE.



Q13) AS A RESULT OF COVID-19, WHICH OF THE FOLLOWING SERVICES OR TYPES OF ASSISTANCE HAVE BEEN NEEDED MOST BY THE THOSE WITHIN YOUR COMMUNITY? (PLEASE SELECT YOUR TOP 3)



11.6 Focus Group Facilitation Guide

Top 10 Community Issues Identified via Community Stakeholder Survey (in no particular order):

*Both health-related and social/environmental issues are listed.

Transportation
Adverse Childhood Experiences (ACEs)
Food Insecurity/Lack of Proper Nutrition
Housing
Education
Discrimination
Access to Care
Substance Abuse
Mental Health
Chronic Disease

Prioritization of Community Issues:

*Attendees will be asked to vote on which 3 community issues they believe should have priority. Selection of the top 3 community issues will be based on majority of votes.

Question: *Out of 10 community issues listed above, which 3 do you believe should be priority focus areas for improvement efforts moving forward?*

Focus Group Discussion Questions:

*These discussions will be tailored to the 3 focus areas selected by the group.

Questions for Focus Area #1, #2, and #3:

*Each of the 7 questions below will be asked independently for each of the 3 focus areas identified. One focus area will be discussed at a time, meaning Questions 1-7 will be asked for Focus Area #1 before moving on to Focus Area #2, and so on.

- 1) *What do you believe the potential root causes are for this focus area?*
- 2) *What resources currently exist in your community to address this focus area?
(programs, services, etc.)*
- 3) *What are some possible solutions to address this focus area?*
- 4) *What resources are needed that don't currently exist in your community to address this focus area?*
- 5) *Who should lead the effort to address this focus area?*
- 6) *Who else should be involved in the effort to address this focus area?
If not already mentioned,*
- 7) *What ideas do you have for the health system to address this focus area?*

Question for ALL 3 Focus Areas:

*Question is for any or all of the 3 focus areas identified.

- 8) *How will COVID-19 affect the community's ability to address any of the focus areas identified?*

11.7 Data Sources and References

- Centers for Disease Control and Prevention
- America's Health Rankings
- County Health Rankings
- Sg2 Analytics
- Kids Count
- Tennessee Department of Health
- Tennessee Commission on Children & Youth
- National Association of County and City Health Officials